

## Benchtop Equipment



# Table of Contents

Tube Revolvers . . . . .	4
Tube Rotators . . . . .	5
High Capacity Tube Rotator . . . . .	6
Vortex Mixers . . . . .	7
Mini Vortex Mixers . . . . .	8
Stackable Tube/Bottle Rollers . . . . .	9
2D Platform Rockers . . . . .	10
Nutating Mixers . . . . .	11
Orbital Shakers . . . . .	12
Benchtop Incubator Shaker . . . . .	14
Mini Centrifuges . . . . .	15
Benchtop Mini Centrifuge . . . . .	16
Magnetic Stirrers . . . . .	17
Hot Plate Stirrers . . . . .	19
MultiPosition HotPlate Stirrers . . . . .	20
MultiPosition Magnetic Stirrers . . . . .	21
Mini Water Bath . . . . .	22
Digital Dry Baths . . . . .	23
Handheld UV Lamps . . . . .	25
Microincinerators . . . . .	26
Stainless Steel Dewar Flasks . . . . .	27

## Benchtop Equipment from Crystal Industries:

- Easy to Use
- Unique Features
- Most models include accessories
- 2-Year Replacement Warranty on all models



# Benchtop Equipment

## Tube Revolvers

Powerful Tube Revolvers with 5 interchangeable rotisseries to accommodate a variety of tube sizes.

### Fixed Speed Tube Revolver



#### Model: TR-01A

Speed	25rpm
Capacity	84 x 0.5/0.8mL / 60 x 1.5/2.0mL / 28 x 5/7mL 28 x 10/15mL / 6 x 50mL Tubes
Environment	4°C - 60°C / Humidity <80%
Max Power	4W

*Included Accessories: 5 Interchangeable Rotisseries*

### Variable Speed Tube Revolver



#### Model: TR-02UA

Speed	10-40rpm
Capacity	84 x 0.5/0.8mL / 60 x 1.5/2.0mL / 28 x 5/7mL 28 x 10/15mL / 6 x 50mL Tubes
Display	LED
Environment	4°C - 60°C / Humidity <80%
Max Power	4W

*Included Accessories: 5 Interchangeable Rotisseries*

## Accessories



<b>TRA01</b>	Holds 7 x 10mL/15mL Tubes - pk2
<b>TRA02</b>	Holds 7 x 5mL/7mL Tubes - pk2
<b>TRA03</b>	Holds 15 x 1.5mL/2.0mL Tubes - pk2
<b>TRA04</b>	Holds 21 x 0.5mL/0.8mL Tubes - pk 2
<b>TRA05</b>	Holds 6 x 50mL Tubes
<b>TRA06</b>	Magnetic Bag Platform, Holds 1 Bag

## Tube Rotators

Tube Rotators are ideal for applications requiring highly efficient and consistent mixing.

### Fixed Speed Tube Rotator



#### Model: TR-03A

Speed	24rpm
Title Angle	90° - 180° (any angle in range)
Carousel Diameter	250mm (9.8in)
Capacity	12 x 50mL / 18 x 15mL / 48 x 2mL / 9 x 50mL / 9 x 50mL+9 x 15mL+12 x 2mL
Environment	4°C - 40°C / Humidity <80%
Max Power	11W

Included Accessories: TRA22 (Carousel for 12 x 50mL Tubes)

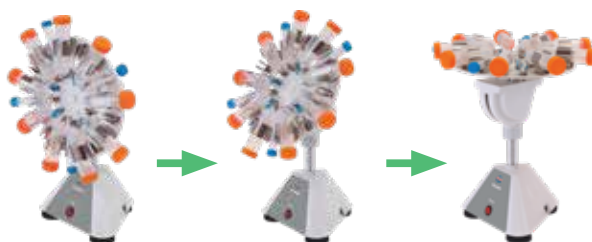
### Digital Tube Rotator



#### Model: TR-04UA

Speed	2-80rpm
Title Angle	90° - 180° (any angle in range)
Carousel Diameter	250mm (9.8in)
Capacity	12 x 50mL / 18 x 15mL / 48 x 2mL / 9 x 50mL / 9 x 50mL+9 x 15mL+12 x 2mL
Environment	4°C - 40°C / Humidity <80%
Display	LCD
Max Power	6W

Included Accessories: TRA22 (Carousel for 12 x 50mL Tubes)



0~90° Angle Adjustable

## Accessories



**TRA19**  
Carousel holds  
12 x 2mL, 19 x 5mL  
and 9 x 50mL Tubes



**TRA20**  
Carousel holds  
48 x 2mL Tubes



**TRA21**  
Carousel holds  
18 x 15mL Tubes



**TRA22**  
Carousel holds  
12 x 50mL Tubes



**TRA15**  
Tube Holder  
for 50mL Tubes



**TRA16**  
Tube Holder for  
5mL/10mL/15mL/20mL Tubes



**TRA17**  
Tube Holder for  
2mL Tubes

# Benchtop Equipment

## High Capacity Tube Rotator



### Model: TR-05UA

Speed	5-80rpm
Title Angle	95°- 180°(Six Steps: 95°, 112°, 129°, 146°, 163°, 180°)
Carousel Diameter	290mm (11.4in)
Capacity	15 x 50mL / 30 x 15mL / 10 x 10mL/15mL +20 x 5mL/7mL/ 64 x 18.5mm Culture Tubes/64 x 14mm Culture Tubes
Display	LED
Environment	4°C - 40°C / Humidity <80%
Max Power	8W



Included Accessories: TRA25 (Carousel for 15 x 50mL Tubes)

## Accessories



**TRA23**  
Carousel holds  
50 x 1.5mL/2.0mL Tubes



**TRA24**  
Carousel holds  
30 x 15mL Tubes



**TRA25**  
Carousel holds  
15 x 50mL Tubes



**TRA15**  
Tube Holder  
for 50mL Tubes



**TRA16**  
Tube Holder for  
5mL/10mL/15mL/20mL Tubes



**TRA26**  
Carousel holds  
10 x 10mL/15mL+  
20 x 5mL/7mL Tubes



**TRA27**  
Drum holds  
64 x 14mm Culture Tubes



**TRA28**  
Drum holds  
64 x 18.5mm Culture Tubes



**TRA17**  
Tube Holder for  
2mL Tubes

## Vortex Mixers

Powerful, quiet and stable Vortex Mixers for a variety of mixing applications, featuring touch control, timed runs and continuous run modes.

### Digital Timer and Analog Speed



**Model: VM-01UA**

Orbit	4.5mm
Speed Range	0~3000rpm
Single Tube Head Dimensions	76mm
Max Load	0.5kg
Environment	5°C - 40°C / Humidity <80%
Max Power	11W

Included Accessories: VMA01 Single Tube Head

### Vortex Mixer with Digital Timer and Speed



**Model: VM-02UA**

Orbit	4.5mm
Speed Range	200~3000rpm
Single Tube Head Dimensions	76mm
Max Load	0.5kg
Environment	5°C - 40°C / Humidity <80%
Max Power	24W

Included Accessories: VMA01 Single Tube Head

## Accessories



**VMA01**  
Single Tube Head



**VMA02**  
Adapter for use with VMA04  
and VMA05



**VMA03**  
Adapter for use with VMA07,  
VMA08 and VMA09



**VMA04**  
Holder 7 x 12mm Tubes  
(need VMA02)



**VMA05**  
Customizable Tube Blank  
Head (need VMA02)



**VMA06**  
Microplate Holder



**VMA07**  
Elisa Plate Holder  
(need VMA03)



**VMA08**  
Combo Tube Holder,  
1.5mL/2.0mL/  
5mL/7mL/10mL/15mL (need  
VMA03)



**VMA09**  
PCR Tube Holder  
(need VMA07)

# Benchtop Equipment

## Mini Vortex Mixers

Your everyday, personal Vortex Mixer, compact, colorful and powerful with 3,000rpm mixing speed for tubes up to 80mL.



### Model: VM-03UA

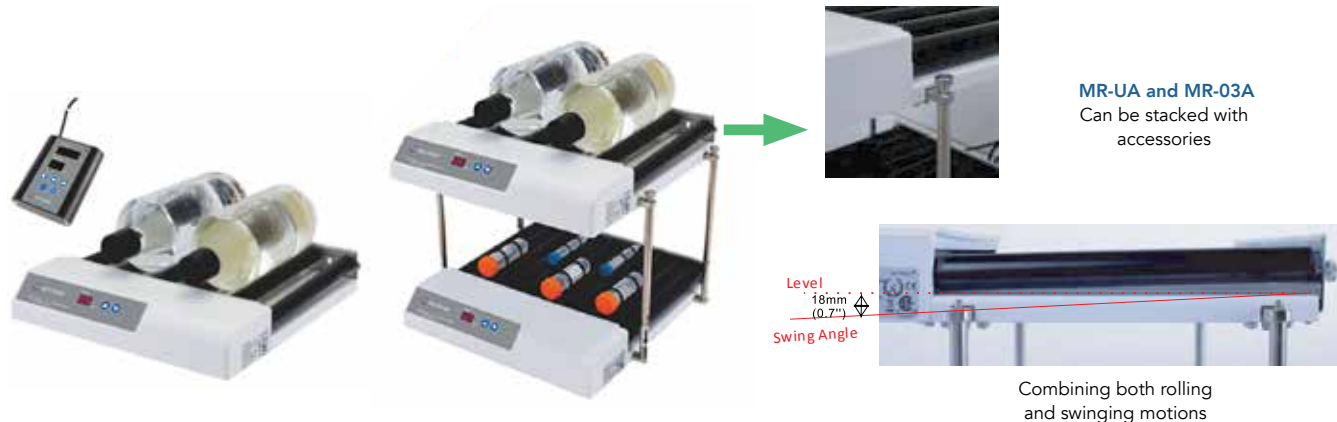
Orbit	4.5mm
Max. Capacity	80mL (1 Tube)
Max. Tube Diameter	30mm
Speed	3000rpm
Environment	5°C - 40°C / Humidity <80%
Max Power	5W

### Colors

VM-03UA	Blue
VM-03RUA	Red
VM-03GUA	Green
VM-03PUA	Purple

## Stackable Tube/Bottle Rollers

Compact, Stackable Incubator safe Rollers with Remote Control.



### Model: MR-01UA Stackable Roller

No. of Roller Bars	6 Standard Up to 11 Max rollers optional
Roller Speed	0.5~80rpm
Roller Dimension (DXL)	28 x 269mm
Dimension (W x D x H)	378 x 360 x 72mm
Max Tube/Bottle Diameter	120mm (4.72in)
Timer Range	0~999min or Continuous
Max Load	6.5kg (Incl. Container)
Environment	5°C - 60°C / Humidity <95%/ CO2 5%
Stackable	Yes
Power	10w

Included Accessories: MRA02, MRA03 and MRA05

### Model: MR-03UA 3D Swing Angle Roller

No. of Roller Bars	11
Roller Speed	0.5~80rpm
Roller Dimension (DXL)	28 x 269mm
Dimension (W x D x H)	378 x 360 x 72mm
Swing Dimension	18mm (0.71in)
Max Tube/Bottle Diameter	120mm (4.72in)
Timer Range	0~999min or Continuous
Max Load	6.5kg (14.33lb) 3 x 1500mL Bottles
Environment	5°C - 60°C / Humidity <95% / CO2 5%
Stackable	Yes
Power	10w

Included Accessories: MRA02, MRA03 and MRA05

## Accessories



**MRA01**  
Fixed Angle Roller - pk2



**MRA02**  
O-Rings for  
50mL Tubes - pk20



**MRA03**  
O-Rings for  
15mL Tubes - pk20



**MRA04**  
Bars for Stacking  
- pk4



**MRA05**  
Remote Control



**MRA07**  
3D Swing Angle  
Roller - pk2



# Benchtop Equipment

## 2D Platform Rockers

Designed for gentle mixing of solutions and reagents, ideal for blotting and staining applications, featuring compact size, robust construction and quiet operation.



### Model: NS-14UA Large Capacity Rocker

*(High Profile 2D Rocker w / adjustable time, speed and angle)*

Speed Range	1~50rpm
Speed Accuracy	1rpm
Title Angle	1~15° (adjustable in 1°increments) Max.
Environment	5°C - 40°C / Humidity <80%
Max Load	4.5kg
Timer Range	0~9999min
Platform Dimensions	307 x 267mm
Dimension (W x D x H)	440 x 296 x 209mm

*Included Accessories: NSA01 Rubber Strips pk 6 and NSA02 Dimple Rubber Mat*



### Model: NS-04A 2D Fixed Speed Rocker

Speed	24rpm
Speed Accuracy	1rpm
Title Angle	±10°
Max Load	2kg
Environment	5°C - 40°C / Humidity <80%
Power	4W
Platform Dimensions	307 x 267mm
Dimension (W x D x H)	380 x 290 x 150mm

*Included Accessories: NSA01 Rubber Strips pk 6 and NSA02 Dimple Rubber Mat*



### Model: NS-05UA

*(2D Rocker, w / adjustable Speed and Time)*

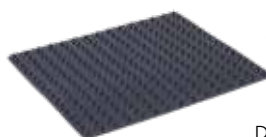
Speed Range	2~80rpm
Speed Accuracy	1rpm
Title Angle	±10°
Max Load	2kg
Environment	5°C - 40°C / Humidity <80%
Timer Range	0~99h 59min
Platform Dimensions	307 x 267mm
Dimension (W x D x H)	380 x 290 x 150mm

*Included Accessories: NSA01 Rubber Strips pk 6 and NSA02 Dimple Rubber Mat*

## Accessories



**NSA01**  
Rubber Strips for Securing  
Tubes etc, to Platform pk6



**NSA02**  
Dimpled Rubber Mat



**NSA04**  
Stacking Platform  
Assembly

## Nutating Mixers

Nutating Mixers are designed for sample mixing combining the motions of an Orbital Shaker and 2D Rocker ideal for any application requiring through sample mixing.

20°



### Model: NS-10UA Fixed Speed Nutating Mixer

Speed	24rpm
Speed Accuracy	1rpm
Title Angle	20°
Environment	5°C - 40°C / Humidity <80%
Max Load	0.8kg
Platform Dimensions	307 x 267mm
Dimension (W x D x H)	440 x 296 x 261mm
<i>Included Accessories: NSA01 Rubber Strips pk 6 and NSA02 Dimple Rubber Mat</i>	

20°



### Model: NS-11UA

Speed	2~60rpm
Speed Accuracy	1rpm
Title Angle	20°
Environment	5°C - 40°C / Humidity <80%
Max Load	0.8kg
Timer Range	0~99h 59min
Platform Dimensions	307 x 267mm
Dimension (W x D x H)	440 x 296 x 255mm
<i>Included Accessories: NSA01 Rubber Strips pk 6 and NSA02 Dimple Rubber Mat</i>	

7°



### Model: NS-12UA

Speed	2~80rpm
Speed Accuracy	1rpm
Title Angle	7°
Environment	5°C - 40°C / Humidity <80%
Max Load	0.8kg
Timer Range	0~99h 59min
Platform Dimensions	307 x 267mm
Dimension (W x D x H)	440 x 296 x 189mm
<i>Included Accessories: NSA01 Rubber Strips pk 6 and NSA02 Dimple Rubber Mat</i>	

7°



### Model: NS-13UA Multi Modes Nutating Mixer

Speed	5~100rpm
Swing Angle	0~360°
Vibrating Angle	0~5°
Title Angle	7°
Environment	5°C - 40°C / Humidity <80%
Max Load	1kg
Orbit	23mm
Platform Dimensions	307 x 267mm
Dimension (W x D x H)	440 x 296 x 226mm
<i>Included Accessories: NSA01 Rubber Strips pk 6 and NSA02 Dimple Rubber Mat</i>	

20°



### Model: NS-01A Fixed Speed 3D Nutating Shaker

Speed	24rpm
Title Angle	20°
Environment	5°C - 40°C / Humidity <80%
Max Load	0.8kg
Power	20W
Platform Dimensions	260 x 260mm
Dimension (W x D x H)	260 x 260 x 190mm

## Accessories



**NSA01**  
Rubber Strips for Securing  
Tubes etc, to Platform pk6



**NSA02**  
Dimpled Rubber Mat



**NSA04**  
Stacking Platform  
Assembly

## Orbital Shakers

Perfect for culturing microbes, washing blots and general mixing.



### Model: SYC-2102A High Capacity Orbital Shaker

Orbit	26mm (1in)
Speed Range	30-300rpm
Max Load	10kg
Capacity	36 x 50mL/24 x 100mL / 17 x 150mL/200mL/250mL/ 12 x 500mL/6 x 1L/4 x 2L / 4 x 3L / 2 x 5L
Timer Range	0~99h 59 min
Environment	5°C - 40°C / Humidity <80%
Max. Power	85W
Timer Range	0~99h 59 min
Display	LED
Platform Dimensions	400 x 400mm
Dimension (W x D x H)	432 x 535 x 190mm

*Included Accessories: standard platform with non-skid mat*



### Model: OS-03UA Mini Orbital Shaker

Orbit	20mm
Speed Range	30~300rpm
Max Load	2.5kg
Capacity	15 x 50mL/12 x 100mL / 9 x 150mL/200mL/250mL/ 6 x 500mL/4 x 1L
Timer Range	0~99h 59 min
Environment	5°C - 40°C / Humidity <80%
Max. Power	8.5W
Timer Range	0~99h 59 min
Display	LCD
Platform Dimensions	307 x 267mm
Dimension (W x D x H)	345 x 240 x 111mm

*Included Accessories: OSA13 Aluminum Platform*



### Model: OS-05UA Adjustable Rocker/Shaker

Speed Range	5~120rpm
Max Load	9.8kg
Title Angle	0~12°
Timer Range	0~99h59min
Environment	5°C - 40°C / Humidity <80%
Timer Range	0~99h 59 min
Display	LED
Platform Dimensions	307 x 267mm
Dimension (W x D x H)	440 x 296 x 218mm

*Included Accessories: NSA01 Rubber Strips pk6, NSA02 Dimpled Rubber Mat and OSA34 pk2*

## Orbital Shakers



### Model: OS-06UA Multi Purpose Orbital Shaker

Speed Range	5~450rpm
Max Load	4.5kg
Capacity	20 x 50mL/8 x 100mL x 17 x 150mL/200mL/250mL/ 6 x 500mL/4 x 1L/2 x 2L / 1 x 5L
Speed Accuracy	±1rpm (@≤100rpm) / ±1% (@>100rpm)
Orbital Diameter	10mm
Timer Range	0~99h 59 min
Environment	5°C - 40°C / Humidity <80%
Display	LED
Platform Dimensions	310x284mm
Dimension (W x D x H)	440 x 296 x 129mm

Included Accessories: OSA21 Universal Platform



### Model: OS-07UA Microplate Orbital Shaker

Speed Range	150~1000rpm
Max Load	4kg
Capacity	4 x Microplates/ 6 x Microplates with OSA15 Large Platform Assembly
Speed Accuracy	±1% (@≤299rpm) / ±2% (@>299rpm)
Orbital Diameter	2.5mm
Timer Range	0~99h 59 min
Environment	5°C - 40°C / Humidity <80%
Display	LED
Platform Dimensions	275 x 235mm
Dimension (W x D x H)	440 x 296 x 142mm

Included Accessories: Standard Platform with OSA13 pk6

## Accessories



**OSA01**  
Aluminum Platform for SYC-2102A



**OSA02**  
Platform with 4 Adjustable Bars for SYC-2102A



**OSA03**  
Platform with 2 Adjustable Bars for large flasks for SYC-2102A



**OSA04**  
400mm Bars for Universal Platform for OSA02 and OSA03



**OSA13**  
96-Well Microplate Holder



**OSA14**  
Large Platform for OS-07US (298x274mm)



**OSA15**  
Large Platform with 96 Well Microplate Holders for OS-07UA



**OSA20**  
Platform with Adjustable Bars for OS-06UA



**OSA21**  
Universal Platform for OS-06UA (310x284mm)



**OSA23**  
Aluminum Platform for OS-03UA (290x230mm)



**OSA34**  
Small Wave Tube for OS-5UA

# Benchtop Equipment

## Benchtop Incubator Shaker

Compact size Incubator Shaker with advanced features, a slide out platform, timer, and tempered glass door.



### Model: IS-RSDDA Benchtop Incubator Shaker

Speed Range	0rpm, 30~300rpm
Orbit Diameter	26mm
Speed Accuracy	1rpm
Max. Capacity	Flask Clamps: 28 x 50mL / 16 x 100mL / 12 x 150mL / 9 x 200mL / 9 x 250mL / 6 X 500mL / 4 x 1L Sticky Mat: 28 x 50mL / 20 x 100mL / 15 x 150mL / 14 x 200mL / 12 x 250mL / 8 x 500mL / 5 x 1L
Max Load	10 kg
Environment	5°C - 40°C / Humidity <80%
Temperature Range	Ambient +5° - 80°C
Timer Range	0-999hr
Display	LED
Platform Dimensions	350 x 300mma
Dimension (W x D x H)	440 x 535 x 550mm
Door Open Direction	Rightward

## Accessories



Test Tube Racks,  
various sizes



Flask Clamps, sizes  
25mL – 1L



**IS-A19**  
Universal  
Mini Universal Spring  
Platform



**IS-A34**

Infusion Bottle  
Clamps



**IS-A33**

Infusion Bottle  
Clamps



**IS-A47**  
Sticky Mat  
140 x 140mm



**IS-A37**  
Adjustable Test  
Tube Rack



**IS-A13**  
96 Well Microplate  
Holder



**IS-A27**  
Mini Universal  
Spring Platform



**IS-A34**  
Fixture for  
Separating Funnel



Adjustable Tube Racks, various  
sizes

## Mini Centrifuges

Personal Centrifuges ideal for quick spins, micro-filtration of samples, cell separations and other routine lab procedures. Unit stops when lid is opened.



### Model: MLX-304A

Speed	4000rpm
Rel. G-force	900g
Environment	5°C - 40°C / Humidity <80%
Capacity	6 x 1.5mL/ 6 x 0.5mL/ 16 x 0.2mL
Dimension (W x D x H)	155 x 140 x 115mm
Color	Purple

*Included Accessories: Rotor Heads MLX-7 and MLX-3/Adaptors MLXF-1 and MLXF-2*



### Model: MLX-306A

Speed	6000rpm
Rel. G-force	2000g
Environment	5°C - 40°C / Humidity <80%
Capacity	6 x 1.5mL/ 6 x 0.5mL/ 16 x 0.2mL
Dimension (W x D x H)	155 x 140 x 115mm
Color	White

*Included Accessories: Rotor Heads MLX-7 and MLX-3/Adaptors MLXF-1 and MLXF-2*



### Model: MLX-310A

Speed	10,000rpm
Rel. G-force	5000g
Environment	5°C - 40°C / Humidity <80%
Capacity	6 x 1.5mL/ 6 x 0.5mL/ 16 x 0.2mL
Dimension (W x D x H)	155 x 140 x 115mm
Color	Grey

*Included Accessories: Rotor Heads MLX-7 and MLX-3/Adaptors MLXF-1 and MLXF-2*

## Accessories



**MLXF-1**  
0.5mL Tube Adapter



**MLXF-2**  
0.2mL Tube Adapter



**MLXF-3**  
0.2mL Tube Strip Rotor



**MLXF-7**  
1.5mL Standard Rotor

# Benchtop Equipment

## Benchtop Mini Centrifuge

Large Centrifuge features in a compact footprint. Ideal for quick spin downs of HPLC samples and cell separations with 2 operating speeds and Timed, Continuous and Quick Spin Modes. Fun colorful LED lights alert user when run complete. Unit stops when lid is opened.



### Model: MLX-200FA

Speed Range	6000-9200rpm
Max. Power	40W
Capacity	8 x 1.5mL/2.0mL/ 8 x 0.5mL with supplied adaptors/ 2 x 0.2mL Tube Strips or 16 x 0.2mL Tubes/ 4 x 5mL Tubes
Environment	5°C - 40°C / Humidity <80%
Dimension (W x D x H)	240 x 187 x 139mm

*Included Accessories: Rotor Heads MLX-4, MLX-5 and MLX-6/Adaptors MLXF-1*

## Accessories



**MLXF-1**  
Adaptors for 0.5mL  
Tubes pk 8



**MLXF-4**  
Rotor Head for 1.5mL/2.0mL  
Tubes



**MLXF-5**  
Rotor Head for 5mL Tubes



**MLXF-6**  
Rotor Head for 8-Strip 0.2mL  
PCR Tubes

## Magnetic Stirrers

Essential instruments for every Laboratory for Mixing Solutions.



### Model: MS-01FUA Low Profile Magnetic Stirrer

Speed Range	5~1500rpm
Max. Stirring Capacity	500mL
Max. Stir Bar Length	≤30mm
Max Load	2kg
Environment	5°C - 40°C / Humidity <80%
Power	6W
Platform Dimensions	110 x 110mm
Dimension (W x D x H)	175 x 120 x 20.5mm
Platform Material	ABS Plastic

Included Accessories: MSA05



### Model: MS-01UA LED Display Stirrer

Speed Range	80~2000rpm
Max. Stirring Capacity	2000mL
Max. Stir Bar Length	≤50mm
Max Load	5kg
Environment	5°C - 40°C / Humidity <80%
Display	LED
Power	24W
Platform Dimensions	140 x 140mm
Dimension (W x D x H)	160 x 200 x 48mm
Platform Material	ABS Plastic

Included Accessories: MSA04



### Model: MS-01TUA Touch Screen Stirrer

Speed Range	80~2000rpm
Max. Stirring Capacity	2000mL
Max. Stir Bar Length	≤50mm
Max Load	5kg
Environment	5°C - 40°C / Humidity <80%
Display	LCD Touch Screen
Power	24W
Platform Dimensions	140 x 140mm
Dimension (W x D x H)	160 x 200 x 48mm
Platform Material	ABS Plastic

Included Accessories: MSA04



# Benchtop Equipment

## Magnetic Stirrers



### Model: MS-01AUA Analog Magnetic Stirrer

Speed Range	0~1500rpm
Max. Stirring Capacity	10,000mL
Max. Stir Bar Length	≤80mm
Max. Load	2.5kg
Environment	5°C - 40°C / Humidity <80%
Power	7.5W
Platform Dimensions	175 x 175mm
Dimension (W x D x H)	355 x 240 x 120mm
Platform Material	ABS Plastic

Included Accessories: MSA15



### Model: MS-01DUA Digital Magnetic Stirrer

Speed Range	80~1500rpm
Max. Stirring Capacity	10,000mL
Max. Stir Bar Length	≤80mm
Timer	0-99hr 59min
Max. Load	3kg
Environment	5°C - 40°C / Humidity <80%
Power	12W
Display	LCD
Platform Dimensions	175 x 175mm
Dimension (W x D x H)	355 x 240 x 120mm
Platform Material	ABS Plastic

Included Accessories: MSA15

## Accessories



MSA01	Stir Bar Retriever
MSA02	Stir Bar 8 x 50mm
MSA03	Stir Bar 10 x 40mm
MSA04	Stir Bar 12 x 30mm
MSA05	Stir Bar 7 x 20mm
MSA06	Stir Bar 6 x 15mm
MSA15	Stir Bar 12 x 50mm

## Hot Plate Stirrers

Fast even heating with strong magnets that produce superior results.



### Model: MS-01H7A Ceramic Digital Hotplate

Speed Range	80~1500rpm
Max. Stirring Capacity	10L
Max. Stir Bar Length	80mm
Power	1000W
Ambient Temp.	5~40°C
Platform Dimensions	175 x 175mm
Dimension (W x D x H)	355 x 240 x 129mm / 442 x 299 x 152mm
Platform Material	Ceramic

Included Accessories: MSA15



### Model: MS-01HA Aluminum Digital Hotplate

Speed Range	80~1500rpm
Max. Stirring Capacity	10L
Max. Stir Bar Length	80mm
Power	1000W
Ambient Temp.	5~40°C
Platform Dimensions	175 x 175mm
Dimension (W x D x H)	355 x 240 x 129mm / 442 x 299 x 152mm
Platform Material	Aluminum

Included Accessories: MSA15

# Benchtop Equipment

## Multi-Position Hot Plate Stirrers

Elegant space-saving design provides both heating and stirring for multiple beaker or flask sizes simultaneously.



### Model: MS-05HA 5-Position Hot Plate Stirrer

Speed Range	0rpm, 100rpm~1200rpm
No. of Stirrer Positions	5
Max. Stirring Capacity	500mL
Max. Stir Bar Length	≤50mm
Distance between positions	95mm
Environment	5°C - 40°C / Humidity <90%
Power	220W
Platform Dimensions	475 x 95mm
Dimension (W x D x H)	130 x 612 x 78mm
Platform Material	Black Glass Ceramic

Included Accessories: MSA04 x 5



### Model: MS-10HA 10-Position Hot Plate Stirrer

Speed Range	0rpm, 100rpm~1200rpm
No. of Stirrer Positions	10
Max. Stirring Capacity	500mL
Max. Stir Bar Length	≤50mm
Distance between positions	95mm
Environment	5°C - 40°C / Humidity <90%
Power	450W
Platform Dimensions	475 x 190mm
Dimension (W x D x H)	214 x 612 x 78mm
Platform Material	Black Glass Ceramic

Included Accessories: MSA04 x 10



### Model: MS-15HA 15-Position Hot Plate Stirrer

Speed Range	0rpm, 100rpm~1200rpm
No. of Stirrer Positions	15
Max. Stirring Capacity	500mL
Max. Stir Bar Length	≤50mm
Distance between positions	95mm
Environment	5°C - 40°C / Humidity <90%
Power	660W
Platform Dimensions	475 x 285mm
Dimension (W x D x H)	310 x 612 x 78mm
Platform Material	Black Glass Ceramic

Included Accessories: MSA04 x 15

## Multi-Position Magnetic Stirrers

Multi-Position Magnetic Stirrer base is fully submersible, ideal for use in waterbaths or CO2 Incubator with Remote Control for easy operation.



### Model: MS-04BSUA 4-Position Magnetic Stirrer

Speed Range	80~2000rpm
No. of Stirrer Positions	4
Max. Stirring Capacity	1000mL
Max. Stir Bar Length	≤50mm
Distance between positions	128mm
Ambient Temp	5~50°C (Water) / 5~40°C (Air)
Power	30W
Platform Dimensions	250 x 254mm
Dimension (W x D x H)	280 x 264 x 43mm
Platform Material	304 Stainless Steel

Included Accessories: MSA04



### Model: MS-06BSUA 6-Position Magnetic Stirrer

Speed Range	80~2000rpm
No. of Stirrer Positions	6
Max. Stirring Capacity	1000mL
Max. Stir Bar Length	<50mm
Distance between positions	64mm
Ambient Temp	5~50°C (Water) / 5~40°C (Air)
Power	40W
Platform Dimensions	385 x 254mm
Dimension (W x D x H)	390 x 264 x 42mm
Platform Material	304 Stainless Steel

Included Accessories: MSA04

### Model: MS-15BSUA 15-Position Magnetic Stirrer

Speed Range	80~2000rpm
No. of Stirrer Positions	15
Max. Stirring Capacity	1000mL
Max. Stir Bar Length	<20mm
Distance between positions	64mm
Ambient Temp	5~50°C (Water) / 5~40°C (Air)
Power	20W
Platform Dimensions	385 x 254mm
Dimension (W x D x H)	390 x 264 x 42mm
Platform Material	304 Stainless Steel

Included Accessories: MSA04

# Benchtop Equipment

## Mini Water Baths

Designed to provide precise and accurate temperature control for various size tubes 0.2mL to 7mL Tubes.



### Model: WB-01A Programmable Digital Bath

Programmable	6 Segments
Temp. Range	Ambient +5°C~100°C
Temp. Uniformity	±0.3°C (@37°C)
Ambient Temp.	5~40°C
Bath Volume	240mL
Display	LCD
Max. Power	100W
Dimension (W x D x H)	262x143x96mm

Included Accessories: WBA14 Vapor Insulating Cover



### Model: WB0-02A Digital Bath

Programmable	No
Temp. Range	Ambient +5°C~100°C
Temp. Uniformity	±0.3°C (@37°C)
Ambient Temp.	5~40°C
Bath Volume	240mL
Display	LCD
Max. Power	90W
Dimension (W x D x H)	262x143x96mm

Included Accessories: WBA Vapor Insulating Cover

## Accessories



**WBA10**  
5mL Tube Holder



**WBA11**  
1.5mL/2mL Tube Holder



**WBA12**  
96 Microplate Holder



**WBA13**  
Combination Tube Holder



**WBA14**  
Vapor Cover

## Digital Dry Baths

Designed to provide accurate and stable temperature environment for a variety of tube/plate sizes. Choose 1, 2 or 4 block model, with over 30 blocks to choose from.



### Model: DB-01A Programmable Digital Dry Bath

No. of Chambers	1
Programmable	6 Segments
Timer	0 - 99hr, Continuous
Temp. Range	Ambient +5°C~120°C
Temp. Fluctuation	@50~100°C; $\leq \pm 0.15^\circ\text{C}$ ; @100.1~120°C; $\leq \pm 0.2^\circ\text{C}$
Ambient Temp.	5~40°C
Display	LCD
Max. Power	100W
Dimension (W x D x H)	262 x 143 x 96mm

Included Accessories: DBA05 Insulating Cover



### Model: DB-02A Digital Dry Bath

No. of Chambers	1
Timer	0 - 99hr, Continuous
Temp. Range	Ambient +5°C~120°C
Temp. Fluctuation	@50~100°C; $\leq \pm 0.15^\circ\text{C}$ ; @100.1~120°C; $\leq \pm 0.2^\circ\text{C}$
Ambient Temp.	5~40°C
Display	LCD
Max. Power	100W
Dimension (W x D x H)	262 x 143 x 96mm

Included Accessories: DBA05 Insulating Cover



### Model: DB-03A 2-Block Digital Dry Bath

No. of Chambers	2
Programmable	6 Segments
Timer	0 - 99hr, Continuous
Temp. Range	Ambient +5°C~120°C
Temp. Fluctuation	@50~100°C; $\leq \pm 0.15^\circ\text{C}$ ; @100.1~120°C; $\leq \pm 0.2^\circ\text{C}$
Ambient Temp.	5~40°C
Display	LCD
Max. Power	150W
Dimension (W x D x H)	320 x 220 x 111mm

Included Accessories: DBA05 Insulating Cover x 2



### Model: DB-04A 4-Block Digital Dry Bath

No. of Chambers	4
Programmable	6 Segments
Timer	0 - 99hr, Continuous
Temp. Range	Ambient +5°C~120°C
Temp. Fluctuation	@50~100°C; $\leq \pm 0.15^\circ\text{C}$ ; @100.1~120°C; $\leq \pm 0.2^\circ\text{C}$
Ambient Temp.	5~40°C
Display	LCD
Max. Power	150W
Dimension (W x D x H)	320 x 220 x 111mm

Included Accessories: DBA05 Insulating Cover x 4

## Dry Bath

### Accessories



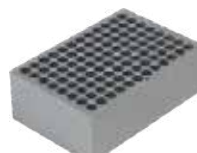
**DBA01**  
24x5mL Block



**DBA02**  
12x1.5mL Half Block



**DBA03**  
10x10/15mL Half Block



**DBA04**  
96x1.2mL Block



**DBA06**  
24x1.5mL Block



**DBA07**  
48x0.2mL Half Block



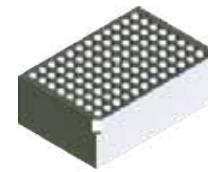
**DBA08**  
24x1.5/2mL Block



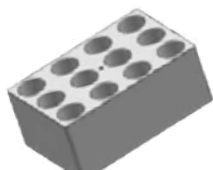
**DBA09**  
30x.05mL Block



**DBA10**  
Flat Block



**DBA12**  
96x1.1/0.2mL PCR Block



**DBA16**  
12x15mL Block



**DBA17**  
5x50mL Block



**DBA23**  
30x6mL Tubes Block



**DBA25**  
20x13mL Tubes Block



**DBA26**  
20x16mL Tubes Block



**DBA27**  
12x15mL Block



**DBA28**  
8x20mL Tubes Block



**DBA29**  
8x25mL Tubes Block



**DBA30**  
3x40mL Tubes Block



**DBA36**  
20x12mL Vials Block



**DBA37**  
20x15mL Vials Block



**DBA38**  
20x16mL Vials Block



**DBA39**  
12x17mL Vials Block



**DBA40**  
12x19mL Vials Block



**DBA41**  
9x21mL Vials Block



**DBA42**  
8x23mL Vials Block



**DBA43**  
8x25mL Vials Block



**DBA44**  
6x28mL Vials Block



**DBA05**  
Insulation Cover



**DBA51**  
Tall Insulation Cover

## Handheld UV Lamps

UV Lamps designed to observe and image DNA and RNA gels as well as plates for thin-layer chromatography.



Model: Corded	BG-10A	BG-30A	BG-40A
Product Name	Corded 254nm UV Lamp	Corded 365nm UV Lamp	Corded Switchable 254m / 365nm UV Lamp
UV Wavelength	254nm	365nm	254nm or 365nm
Window Size	150 x 50 mm (5.9 x 2.0 in)		
UV Intensity (Sensor 10cm away from UV Lamp)	408 $\mu\text{W}/\text{cm}^2$	620 $\mu\text{W}/\text{cm}^2$	254nm: 241 $\mu\text{W}/\text{cm}^2$ 365nm: 572 $\mu\text{W}/\text{cm}^2$
Number of UV Bulbs	2	2	1 x 254nm + 1 x 365nm
Operating Environment	Ambient Temperature: 5°C~40°C Ambient Relative Humidity: $\leq 90\%$		
Power Supply	AC110V+11V. 60Hz		
Dimensions WxDxH	88 x 415 x 60mm (3.5 x 16.3 x 2.4in)		
Net Weight	0.8 kg (1.75 lb)		
IP Protection Rating	IP21		
Certifications	CE		



Model: Portable	BG-12A	BG-32A	BG-44A
Product Name	Portable 254nm UV Lamp	Portable 365nm UV Lamp	Portable Switchable 254m / 365nm UV Lamp
UV Wavelength	254nm	365nm	254nm or 365nm
Window Size	150 x 50 mm (5.9 x 2.0 in)		
UV Intensity (Sensor 10cm away from UV Lamp)	408 $\mu\text{W}/\text{cm}^2$	620 $\mu\text{W}/\text{cm}^2$	254nm: 241 $\mu\text{W}/\text{cm}^2$ 365nm: 572 $\mu\text{W}/\text{cm}^2$
Number of UV Bulbs	2	2	1 x 254nm + 1 x 365nm
Operating Environment	Ambient Temperature: 5°C~40°C Ambient Relative Humidity: $\leq 90\%$		
Power Supply	Powered by a Lithium-Ion Battery, Charged by AC110V $\pm$ 11V. 60Hz		
Dimensions WxDxH	88 x 415 x 60mm (3.5 x 16.3 x 2.4in)		
Net Weight	0.8 kg (1.75 lb)		
IP Protection Rating	IP21		
Certifications	CE		

Model: Portable	BG-12AA	BG-32AA	BG-42AA
Product Name	Portable 254nm UV Lamp	Portable 365nm UV Lamp	Portable Switchable 254m / 365nm UV Lamp
UV Wavelength	254nm	365nm	254nm or 365nm
Window Size	150 x 50 mm (5.9 x 2.0 in)		
UV Intensity (Sensor 10cm away from UV Lamp)	408 $\mu\text{W}/\text{cm}^2$	620 $\mu\text{W}/\text{cm}^2$	254nm: 241 $\mu\text{W}/\text{cm}^2$ 365nm: 572 $\mu\text{W}/\text{cm}^2$
Safety Feature	Automatically shuts off when UV lamp is tilted 135° from facing downward		
Number of UV Bulbs	2	2	1 x 254nm + 1 x 365nm
Operating Environment	Ambient Temperature: 5°C~40°C Ambient Relative Humidity: $\leq 90\%$		
Power Supply	Powered by a Lithium-Ion Battery, Charged by AC110V $\pm$ 11V. 60Hz		
Dimensions WxDxH	88 x 415 x 60mm (3.5 x 16.3 x 2.4in)		
Net Weight	0.8 kg (1.75 lb)		
IP Protection Rating	IP21		
Certifications	CE		

## Accessories



**BG-B**  
BG UV Lamp Battery



**BG-Glasses**  
BG Lamp Safety Glasses



**BGA-01**  
254mm UV Bulb

**BGA-2**  
365mm UV Bulb



## Microincinerators

Designed to safely sterilize metal inoculation loops and needles utilizing infrared heating inside the ceramic devices without an open flame which protects the user.



### Model: ST-14A Microincinerator with Adjustable Angle

Max.Temp in Operation Mode	900°C ±50°C
Max.Temp in Stand-alone Mode	600°C ±50°C
Ambient Temp.	4~60°C
Sterilization Time	3~5s
Relative Humidity	≤90% Non-condensing
Angle Adjustment	Yes
Power	200W
Depth of Heated Area	130mm
Max. Sample Diameter	14mm



### Model: ST-14A Microincinerator with Fixed Angle

Max.Temp in Operation Mode	900°C ±50°C
Max.Temp in Stand-alone Mode	600°C ±50°C
Ambient Temp.	4~60°C
Sterilization Time	3~5s
Relative Humidity	≤90% Non-condensing
Angle Adjustment	No
Power	200W
Depth of Heated Area	130mm
Max. Sample Diameter	14mm

## Accessory



**STA01**  
Inoculation Loop Holder

## Stainless Steel Dewar Flasks

The Stainless Steel Dewar Flasks are used to store and transport low-temperature liquids, and gases or high-temperature liquids. This product is available in 1000mL or 500mL and comes complete with vented stainless steel lids. Hot liquids, cooling of small samples, Liquid nitrogen (LN2), dry ice, CO2, and other cryogenic gases, are well suited for these insulated containers.



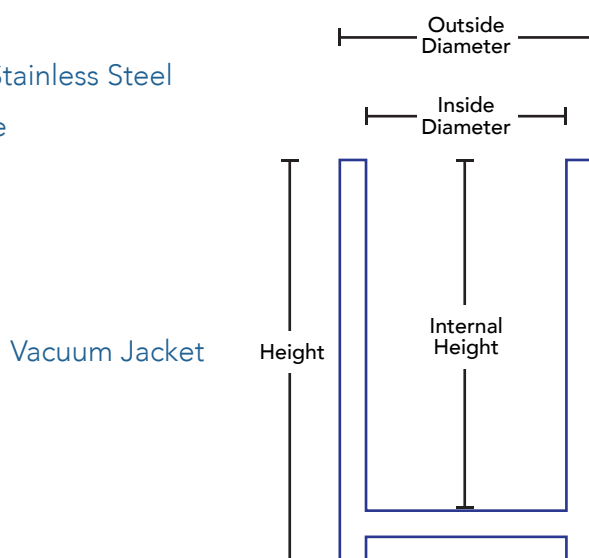
### Model: SDF-500

Capacity	500mL
Outside Diameter	86mm / 3.38in
Inside Diameter	65mm / 2.56in
Height	203mm / 7.99in
Internal Height	182mm / 6.17in

### Model: SDF-1000

Capacity	1000mL
Outside Diameter	120mm / 4.72in
Inside Diameter	100mm / 3.96in
Height	177mm / 6.97in
Internal Height	157mm / 6.18in

- Temperature Range: -190°C – 200°C
- Constructed of Pharmaceutical Grade Stainless Steel
- SDF-1000 includes a Removable Handle



**Sales & Product Support:**

3727 Greenbriar Dr. Suite 304,  
Stafford, TX. 77477  
866-674-7220 | 281-242-6294  
info@bsilab.com

