

TEST CHAMBERS



ENVIRONMENTAL AND STABILITY



- ✓ **VERSATILE TESTING:** Supports a wide range of shelf-life applications with a 5°C to 70°C range, exceeding ICH Q1A standards.
- ✓ **ECO-FRIENDLY & COST-EFFECTIVE:** Energy-efficient design reduces costs and simplifies installation, with customizable options for your specific SOPs.
- ✓ **DURABLE PRECISION:** Stainless-steel interiors and controlled humidity up to 95% ensure reliable, long-lasting performance.



PHOTOSTABILITY

- ✓ **FAST, PRECISE TESTING:** Complete ICH Q1B Option II tests in half the time with even light distribution and precise control.
- ✓ **PURPOSE-BUILT DESIGN:** Specifically designed for photostability testing with a 10°C to 35°C range and controllable visible, UV, and humidity.
- ✓ **USER-FRIENDLY CONTROL:** Large touchscreen simplifies custom cycle setup and provides clear, real-time feedback.

INCUBATORS



INCUBATING SHAKER

- ✓ **PRECISE CONTROL:** The 7406 series offers exact management of temperature, CO₂, humidity, RPM, and orbit size for optimal mammalian cell growth.
- ✓ **COMPACT AND VERSATILE:** Adjustable orbits, high shaking capacity, and a universal platform in a cleanroom-compatible design.
- ✓ **EASY OPERATION:** Intuitive color touchscreen simplifies use and enhances versatility.



STACKABLE CO₂ INCUBATOR

- ✓ **INCREASED CAPACITY:** 10 cu. ft. size offers 1.5x more culture capacity than standard incubators, with superior temperature stability thanks to thermal gel technology.
- ✓ **FLEXIBLE TEMPERATURE RANGE:** Functions from 10°C above ambient to 60°C, supporting a wide variety of cell culture applications.
- ✓ **EFFORTLESS STERILIZATION:** Optional dry H₂O₂ cycle offers quick and clean sterilization with no post-cycle cleanup needed.



REACH-IN CO₂ INCUBATOR

- ✓ **ADAPTABLE TEMPERATURE CONTROL:** Handles any internal heat load with a range from 10°C above ambient to 60°C, featuring modular shelving for diverse culture vessels.
- ✓ **EFFORTLESS STERILIZATION:** Optional 2-hour dry H₂O₂ cycle offers quick, no-cleanup sterilization, ideal for cGMP environments.
- ✓ **VERSATILE DESIGN:** Available in free-standing or in-wall configurations, with shaker-ready heavy-duty shelves in our 7401 units.



CARON
SCIENTIFIC

740 373 6809 • 800 648 3042

740 374 3760

WWW.CARONSCIENTIFIC.COM

CARON SCIENTIFIC

Setting the Standard in Environmental Control

FAMILY OF PRODUCTS

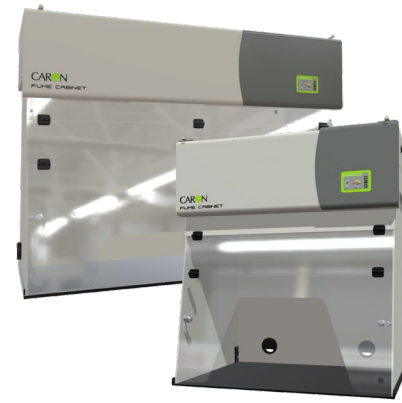
GROWTH CHAMBERS



PLANT GROWTH

- ✓ **CUSTOMIZABLE LIGHTING:** Choose from high-intensity LED or fluorescent options, adjustable up to 1,500 micromoles.
- ✓ **VERSATILE SIZES:** Available in sizes from 22 to 75 cu.ft., with temperature control from 10 to 50°C.
- ✓ **EFFICIENT DESIGN:** Low-heat emissions and adaptable settings ensure cost-effective and user-friendly operation.

OPERATOR & PRODUCT PROTECTION CABINETS



POWDER WEIGHING CABINETS

- ✓ **ADVANCED SAFETY:** Protects operators with H14/U15 HEPA filters for a particle-free, quiet environment.
- ✓ **USER-FRIENDLY & PRECISE:** Featuring touchscreen controls, safety alarms, and excellent visibility for precise weighing and control.
- ✓ **CUSTOMIZABLE & EFFICIENT:** Compact designs with optional extras and flexible stands, ensuring top safety, precision, and efficiency in powder handling.



OPERATOR & PRODUCT PROTECTION ENCLOSURES

- ✓ **ENHANCED SAFETY:** Features high-velocity inflow air, alarms, alerts, and advanced filtration for operator protection and sample security.
- ✓ **COMPLETE CUSTOMIZATION & CONTROL:** Offering access options, color choices, airflow control, and safety features tailored to specific robotics systems.
- ✓ **GLOBAL STANDARDS COMPLIANCE:** Meets NSF Standard 49 (A2) and EN 12469:2000 certifications for secure and efficient lab operations.

BATHS/CIRCULATORS



INSECT REARING

- ✓ **PRECISE CONTROL:** 7340 Series Chambers offer exact temperature, humidity, and advanced LED lighting for ideal insect rearing conditions.
- ✓ **HIGH-PERFORMANCE & LOW-MAINTENANCE:** Durable, stainless-steel interiors with snap-out design and optional H2O2 sterilization for easy cleaning and research reliability.
- ✓ **CUSTOMIZABLE & EFFICIENT:** Flexible installation, intuitive touchscreen controls, energy-efficient operation, and options like "No Blue" LED lighting and full-spectrum LEDs.



BATH/CIRCULATOR

- ✓ **EFFICIENT THERMAL MANAGEMENT:** Caron's 2050-1 offers robust heating, cooling, and circulation with a temperature range of -15°C to 90°C in a compact footprint, ideal for electron microscopes and lasers.
- ✓ **DURABLE, USER-FRIENDLY DESIGN:** Chemical-resistant stainless-steel, sealed control panel, natural refrigerant, quick-connect fittings, LED display, and easy programming for hassle-free operation.
- ✓ **SAFE & RELIABLE OPERATION:** Built-in alarms for temperature and liquid levels ensure dependable cooling for critical thermal management in tight spaces.



DUCTLESS FUME CABINETS

- ✓ **ADVANCED FILTRATION & ECO-FRIENDLY DESIGN:** Utilizing Chemcap filtration with eco-friendly additives to capture toxic substances and ensure a safe lab environment.
- ✓ **USER-FRIENDLY & EFFICIENT OPERATION:** 360-degree Clearview, touchscreen controls, and quiet operation for maximum visibility and efficiency.
- ✓ **CUSTOMIZABLE SAFETY:** Options include rear baffles, electronic filter alarms, and audible airflow alerts for enhanced safety.



ANIMAL REARING

- ✓ **CUSTOMIZED ENVIRONMENTS:** 7350 Series Chambers offer precise, controlled settings for a variety of species, mimicking natural habitats.
- ✓ **DURABLE & EASY MAINTENANCE:** Corrosion-resistant stainless steel, adjustable air exchange, customizable lighting, and touchscreen controls ensure easy upkeep and integration.
- ✓ **ADVANCED & FLEXIBLE OPTIONS:** Multiple sizes with features like H2O2 sterilization and gVapor® humidification create a stress-free, SPF environment for better outcomes and animal welfare.



CRSY102

- ✓ **COMPACT & EASY INSTALLATION:** CRSY102 offers a convenient solution for labs with limited water access and floor drains.
- ✓ **EFFICIENT WATER FILTRATION & PLACEMENT:** Filters tap and drain water, allowing flexible placement of humidified chambers without costly lab-wide systems or retrofitted drains.
- ✓ **COST SAVINGS & SIMPLIFIED MAINTENANCE:** Generates Type II equipment-grade water with a space-efficient design, ensuring resource savings and easy maintenance.



LAMINAR FLOW CABINETS

- ✓ **UNMATCHED CLEAN AIR CONDITIONS:** Provides particle-free, bacteria-free conditions with advanced HEPA filtration (H14) and efficient pre-filters.
- ✓ **HIGH-QUALITY CONSTRUCTION & COMFORT:** Corrosion-resistant, UV-stabilized acrylic construction ensures visibility, comfort, and quiet operation.
- ✓ **CUSTOMIZABLE & VERSATILE:** Available in vertical and horizontal options with features including rear baffles and filter alarms, ideal for various applications and compliant with global standards.