

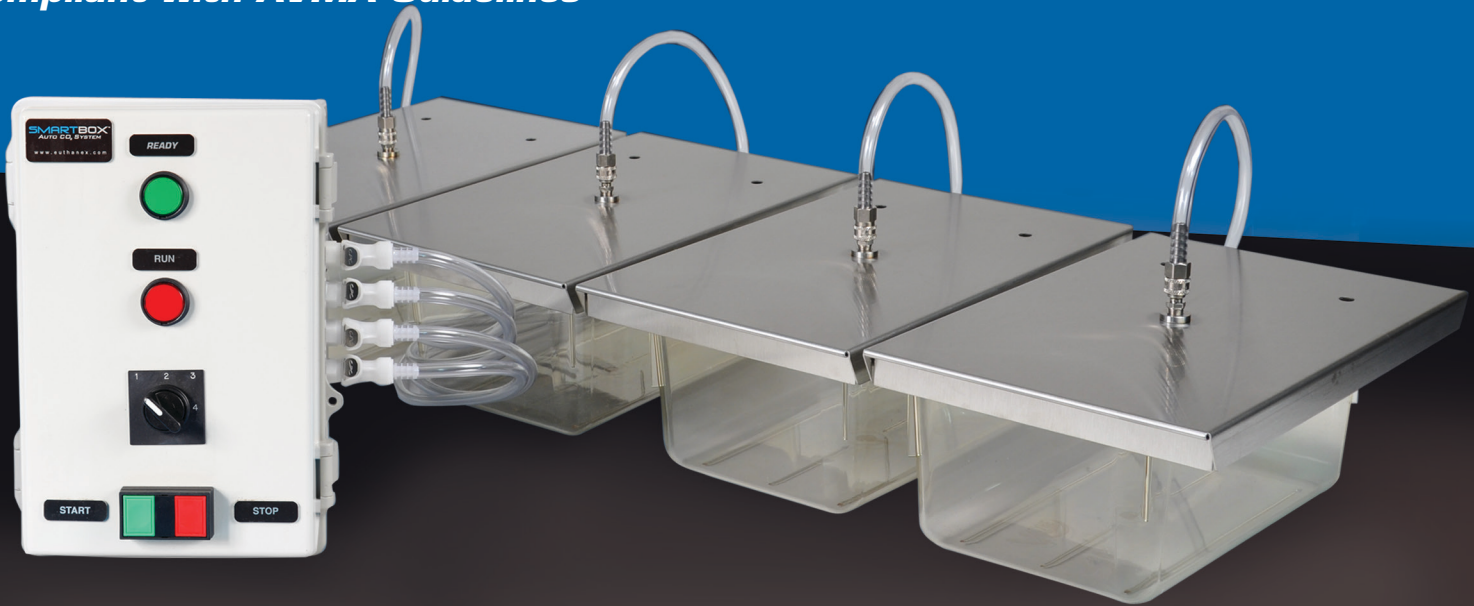
EA-34000 SMARTBOX® Lab Control Unit

SMARTBOX®

This unit is designed for small scale use by individual investigators in their laboratories. The Controller automates on/off gas flow at the push of a button, delivering CO₂ to an individual cage or Euthanex Lid. The EA-34000 has four gas outputs and four programmable cycles that include charge and dwell times. The run and ready lights visually indicate operation and completion.

Operates at a fixed flow rate based on the external CO₂ source.

Compliant with AVMA Guidelines



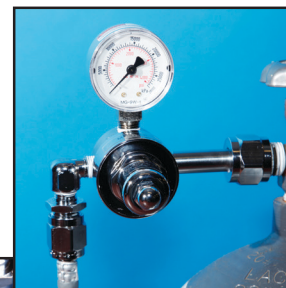
Lids and chambers not included

EA-34000 includes: SMARTBOX® Lab Control Unit
and four EA-1130 Lab Unit Hose

Lab Control Unit Features:

- Treats animals at individual cage level
- Designed for investigators that need to retrieve animals quickly
- Utilizing the full range of Euthanex Lids or existing induction chambers
- Minimizes operator error and excessive gas use
- Automatic shut-off saves gas and protects personnel
- Selector switch allows for four different cycle times
- Lights indicate cycle completion
- Easily attaches to wall

Accessories



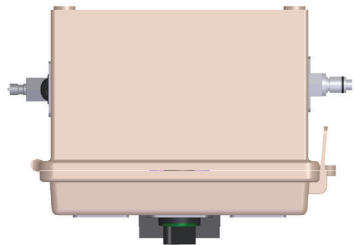
Flow Restrictor

EP-1150-P



EP-IL60

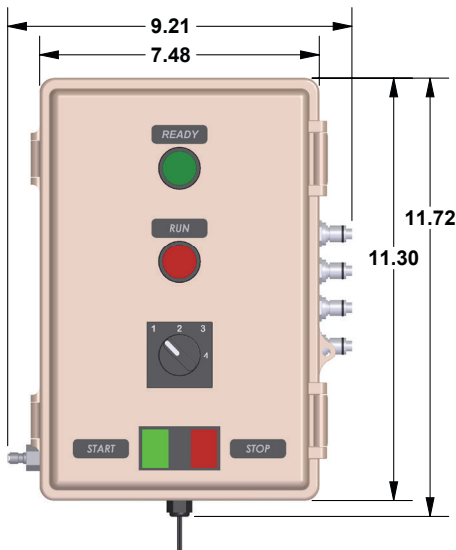
SMARTBOX®



TOP VIEW



LEFT SIDE VIEW



FRONT VIEW

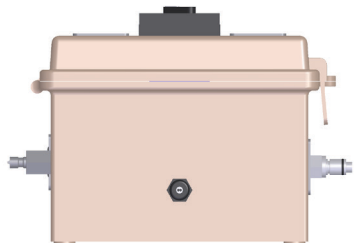


RIGHT SIDE VIEW



ISOMETRIC VIEW

NOTE:
REQUIRES 110 VAC.



BOTTOM VIEW

SMART BOX LAB CONTROL UNIT
EA-34000