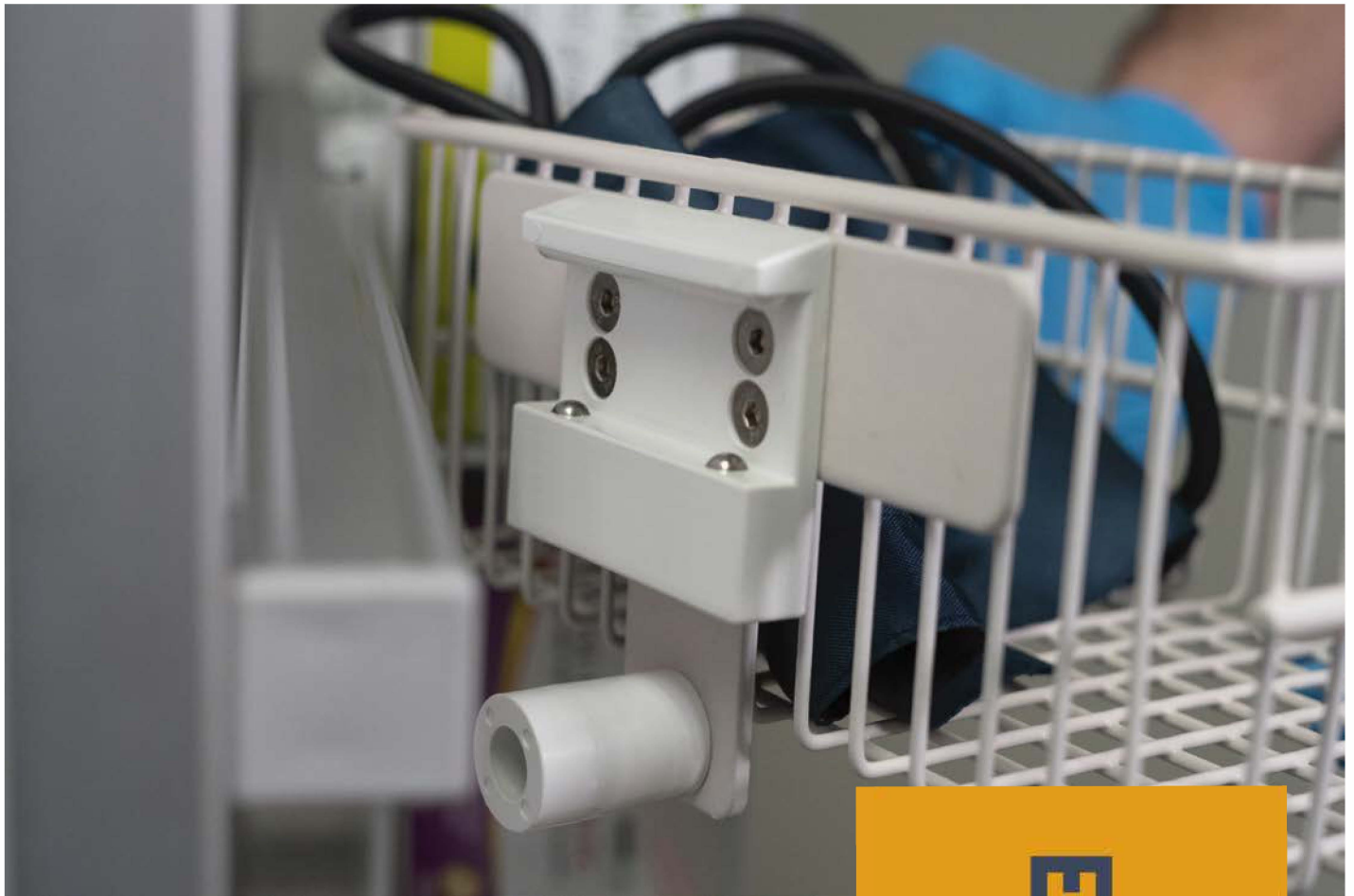
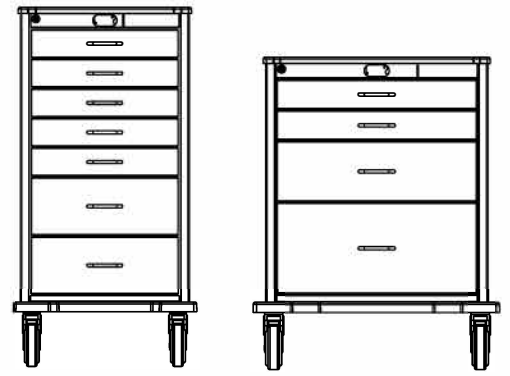


# STAT CART ACCESSORIES



**EVERHUTCH**

# STAT CART | EQUIPMENT MANAGEMENT

The use of an Equipment Management Rail System in any patient care environment “FUTURE-PROOFS THE FACILITY.” Through a lifecycle of changes, it ensures the continuity and flexibility of the equipment and workflow processes for the duration of the built environment while maintaining integrity and preserving the value of the wall system, panel, or substrate. The rail system makes it possible to reduce room revenue loss due to changing equipment and par level bedside inventory, clear valuable floor space, improves cleanliness, reduce HAI's, provides an organized and efficient space for better workflow and HCAHPS scores, and increases hospital profitability.

## FROM WALL TO CART



# STAT CART | ACCESSORIES

## TILT BINS - WHITE PLASTIC BOX WITH CLEAR PLASTIC BINS

**MSC641**  
14"H x 12"W x 14"D  
**1 Bin**



**MSC642**  
14"H x 24"W x 14"D  
**2 Bin**



**MSC643**  
9.5"H x 24"W x 9.5"D  
**3 Bin**



**MSC644**  
8.25"H x 23.75"W x 5.5"D  
**4 Bin**



**MSC645**  
6.5"H x 23.75"W x 4.5"D  
**5 Bin**

## BASKETS- WHITE PLASTIC BOX WITH CLEAR PLASTIC BINS



**MSC646**  
4.25"H x 10"W x 7"D  
**3 Bin**



**MSC647**  
4"H x 18"W x 10"D  
**3 Bin**



**MSC648**  
4.75"H x 5.375"D  
**UTENCIL CUP**

## HOOKS - & INTEGRATED COUNTING PLATE



**MSC649**  
2.5"H x 1.5"W x 2"D  
**1 HOOK 2"**



**MSC650**  
2.5"H x 1.5"W x 4"D  
**1 HOOK 4"**



**MSC651**  
2.5"H x 12"W x 2"D  
**3 HOOK 2"**



**MSC652**  
2.5"H x 12"W x 4"D  
**3 HOOK 4"**

# STAT CART

# ACCESSORIES

## GLOVE BOX HOLDER - ABS CLEAR PLASTIC (GLOVES NOT INCLUDED)



**MSC625**  
10"H x 18.75"W x 5"D  
**TRIPLE HORIZONTAL**



**MSC622**  
10"H x 18.75"W x 5"D  
**TRIPLE VERTICAL**

## MEDICAL GAS



**MSC621**  
16"H x 5.5"W x 5.5"D  
**WIRE METAL  
OXYGEN HOLDER**



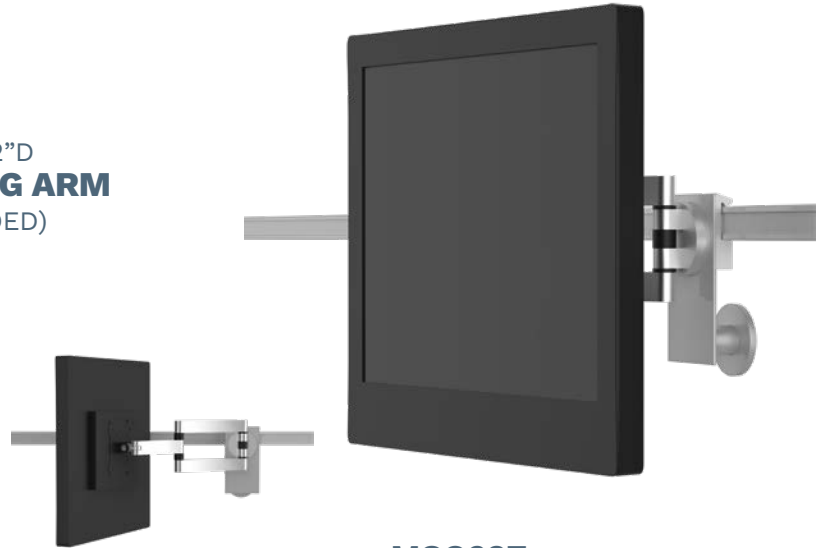
**MSC640**  
6"H x 3.5"W x 8"D  
**SUCTION PUMP SHELF KIT**  
(MONITOR NOT INCLUDED)

# STAT CART | ACCESSORIES

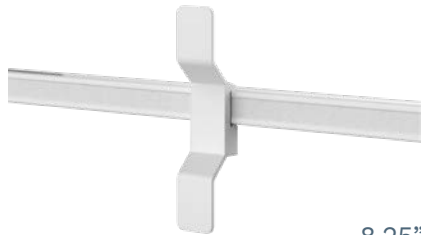
## MONITOR MOUNTING AND CABLE MANAGEMENT



**MSC634**  
5.5"H x 5.5"W x 2"D  
**GCX STYLE SWING ARM**  
(GCX NOT INCLUDED)



**MSC637**  
6"H x 3.5"W x 8"D  
**MOUNTING PLATE AND  
ARTICULATING / TILTING VESA MOUNT**  
(MONITOR NOT INCLUDED)



**MSC654**  
8.25"H x 1"W x 1.5"D  
**CORD CLEAT**

## MISCELLANEOUS - ABS CLEAR PLASTIC (GLOVES NOT INCLUDED)



**MSC636**  
10"H x 18.75"W x 5"D  
**ACRYLIC CHART HOLDER**



**MSC653**  
10"H x 18.75"W x 5"D  
**4 OUTLET  
POWER STRIP**



**MSC640**  
5.5"H x 5.5"W x 2"D  
**DEFIBRILLATOR  
SHELF**

# STAT CART

# ACCESSORIES

## SHELVES - FIXED AND FOLDING



**MSC632**

15"W x 10"D

**FLIP-UP SURFACE 15"  
SIDE MOUNTED**

Scratch resistant food grade high density polyethylene.  
Indented spill lip. Up to 100lb load capacity.



**MSC633**

20"W x 18"D

**FLIP-UP SURFACE 20"  
REAR MOUNTED**

Scratch resistant food grade high density polyethylene.  
Indented spill lip. Up to 100lb load capacity.



**MSC630**

10"W x 8"D

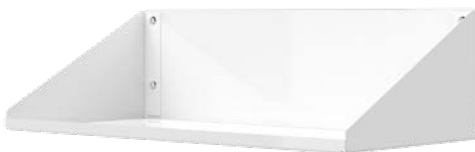
**10" FIXED WRITING SURFACE  
WITH LIP EDGES**



**MSC631**

14.5"W x 13.5"D

**15" FIXED WRITING SURFACE  
WITH LIP EDGES**



**MSC667S**

29"W

**STANDARD WIDTH**



**MSC667N**

22.5"W

**NARROW WIDTH**

# STAT CART | ACCESSORIES

## RAILS



**MSC657**  
21.5"  
**UNIVERSAL SIDE RAIL**



**MSC658S**  
23.5"  
**STANDARD WIDTH  
REAR RAIL**



**MSC658N**  
18"  
**NARROW WIDTH  
REAR RAIL**



**MSC619**  
XXXXXX  
**CPR BOARD AND RAIL**



**MSC655S**  
23.5"W  
**REAR ACCESSORY RAIL KIT  
STANDARD WIDTH**



**MSC655N**  
18"W  
**REAR ACCESSORY RAIL KIT  
NARROW WIDTH**



**MSC664**  
24"H  
**STANDARD WIDTH**



**MSC665**  
38"H  
**STANDARD WIDTH**

# STAT CART

# ACCESSORIES

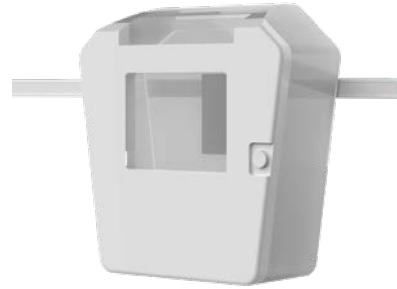
## WASTE MANAGEMENT



**MSC629**  
10"H x 18.75"W x 5"D  
**12QT WASTE BIN &  
AND RAIL MOUNT**



**MSC628**  
10"H x 18.75"W x 5"D  
**RAIL MOUNT  
FOR WASTE BIN**



**MSC623**  
5"H x 5"W x 1"D  
**SHARPS BOX &  
RAIL MOUNT**



**MSC627**  
5"H x 5"W x 1"D  
**RAIL MOUNT FOR  
SHARPS**

## INFUSION MANAGEMENT



**MSC620**  
36"H x 20" pole x 4"D  
**IV POLE**



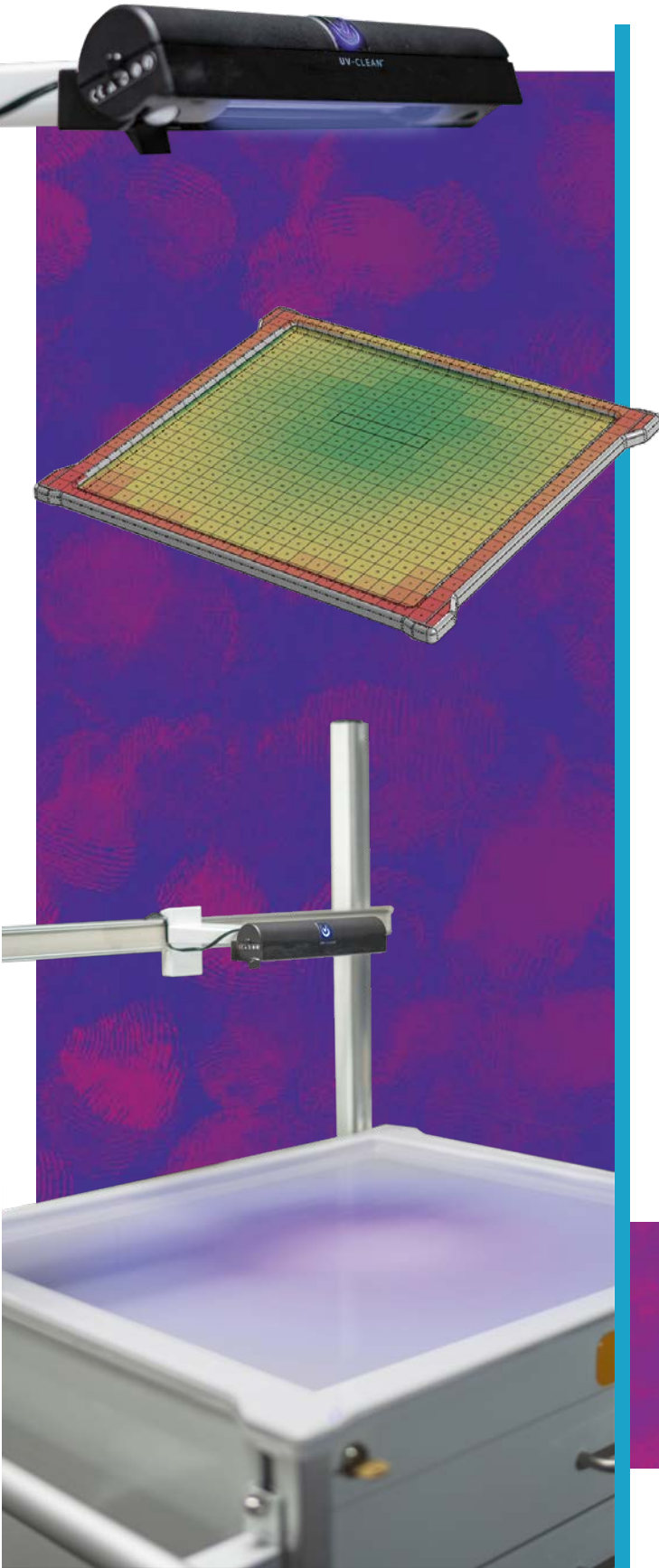
**MSC624**  
1"D x 4"H ON 5' AMF POST  
**C-CLAMP POLE MOUNT**



# ACCESSORY EXAMPLES



# STAT CART



## KILL MICROORGANISMS WITH **UV-CLEAN**

UV-CLEAN by Proximity is the award-winning, **automated device that provides no-touch ultraviolet disinfection** with UV-C light, the most germicidal ultraviolet light. This strong and safe device efficiently inactivates 99.9% of bacteria and viruses on high touch surfaces. With this small, yet powerful device, you can say goodbye to microorganisms and take the fear out of using dirty surfaces.

### APPROXIMATE 99% REDUCTION @ 2MINUTES

For the following organisms requires:

Salmonella Species	53 uW/cm <sup>2</sup>
E. Coli	50 uW/cm <sup>2</sup>
Influenza	50 uW/cm <sup>2</sup>
Staphylococcus Species	42 uW/cm <sup>2</sup>
Coronavirus (SARS 1)	35 uW/cm <sup>2</sup>
Streptococcus Species	33 uW/cm <sup>2</sup>

### POINT OF CARE: HEALTHCARE FACILITIES

Hospital acquired infections affect millions of people and add billions of dollars to healthcare costs in the U.S. annually. Although hospitals and healthcare facilities implement rigorous cleaning and disinfection practices to prevent Healthcare Associated Infections (HAIs), harmful pathogens still spread throughout susceptible environments. In fact, HAIs, including C. diff, MRSA and Norovirus, can affect millions of people and add billions of dollars to healthcare costs in the U.S. annually.



80% of pathogens are transferred by touch



1 out of 31 patients develop a HAI



1.7 million HAIs occur in U.S. hospitals each year



Your length of stay in the hospital increases by 17.6 days if you get an HAI