

# HEMOROAM & PHARMAROAM

---

Portable  
Battery-Powered  
Refrigerators and  
Freezers



**ROEMER**  
INDUSTRIES

Blood Bank | Pharmacy | Laboratory

## Key Features

### Leading Mobile Battery-Powered Refrigeration on the Market

Roemer Industries brings you the only battery-powered, medical-grade refrigerators and freezers on the market. These cold storage devices are battery-powered, mobile, and provide temperature uniformity. Keep blood, plasma, vaccines, and pharmaceuticals refrigerated or frozen without the labor and expense of coolers, ice packs, or dry ice.



#### Battery Powered:

- Sustain power from chargeable battery, giving them the ability to provide mobile cold storage for medical supplies.
- Units can maintain temperature for 24-72 hours from a battery
- Built-in, sounding alarm detects when battery is 8 hours from depletion to protect temperature sensitive material from power outage



#### Mobile:

- Chargeable battery, light weight, and wheels allow these medical-grade refrigerators to move around for all mobile needs
- Designed to move on casters, wheels, and carts, to allow easy mobility



#### Temperature Uniformity:

- Medical-grade refrigeration with internal fan circulates air to keep temperatures in exact ranges.
- Digital microprocessor temperature controller contains a built-in audible alarm to protect sensitive material if temperature exits set point range.
- Insulation built into exterior prevents heat from entering



# HEMOROAM



For the storage and transportation of **blood** and **plasma**. Best suited for:

- **Operating Rooms and Emergency Rooms:** Wheel units to surgery and critical areas for “just in case” scenarios
- **Blood Centers:** Replace igloo coolers with mobile refrigeration to maintain proper temperature without time concerns
- **Remote Plasma Collections:** Use mobile freezers for collecting plasma that requires immediate freeze to allow more distant collection from central blood center
- **Disaster Preparedness:** If the electrical grid is down, units can run from a battery or solar power
- **U.S Military:** Helps healthcare workers store blood, plasma, vaccines, and medications in the field

# PHARMAROAM



For the storage and transportation of **vaccine** and **pharmaceuticals**. Best suited For:

- **Pharmacy:** Battery-powered refrigeration protects remote vaccine or pharmaceutical storage from the risk of a power outage
- **Pharmaceutical Sales Representatives:** Units can easily be carried and plugged into a car for battery charge
- **Compound Pharmacy:** Roemer units can be used for temperature sensitive products that must be mobile
- **Researchers:** Any biological items that are temperature sensitive can be transported without concern of power or dry ice
- **Disaster Preparedness**
- **U.S Military**

# HEMOROAM

## General Features



### Hygienic and Water-tight

- Hazmat Certified and built with anodized aluminum to protect against stains and ensure easy maintenance and cleaning
- Water-tight, sealed and anodized, payload compartments resist water and sustain functions.



### Data Logger

- Used to record temperatures at all times to ensure quality control
- Stores up to 16,378 temperature readings



### Battery

- Chargeable battery provides mobility and security of temperature sensitive material



### Mobile

- Lightweight structure with the option of heavy-duty rotating casters, removable casters, Dolly Trolley or a separate medical cart for easy mobility.

### Temperature Uniformity

- Medical-grade refrigeration keeps the temperature in exact ranges and monitors constantly with audible and visual alerts if there is an excursion of temperature.



### Handle

- Stainless steel ergonomic comfort sprung drop handle for pushing unit



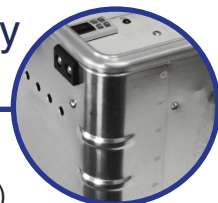
### Platelet drawer

- For storing room temperature platelet and cryo bags
- Fits 3 bags



### High Quality Materials

- Military-grade Aluminum (MIL-SPEC) and stainless steel handles and hinges engineered to prevent rusting and provide durability



### Temperature Uniformity

- Medical-grade refrigeration keeps the temperature in exact ranges and monitors constantly with audible and visual alerts if there is an excursion of temperature.

### Mobile

- Lightweight structure and handle allows for mobility and transportation

### High Quality Materials

- Military-grade Aluminum (MIL-SPEC) and stainless steel handles and hinges engineered to prevent rusting and provide durability

### Smart Power

- Smart charge technology gives unit ability to detect the power source and adapt accordingly for ac/dc

### Hygienic and Water-tight

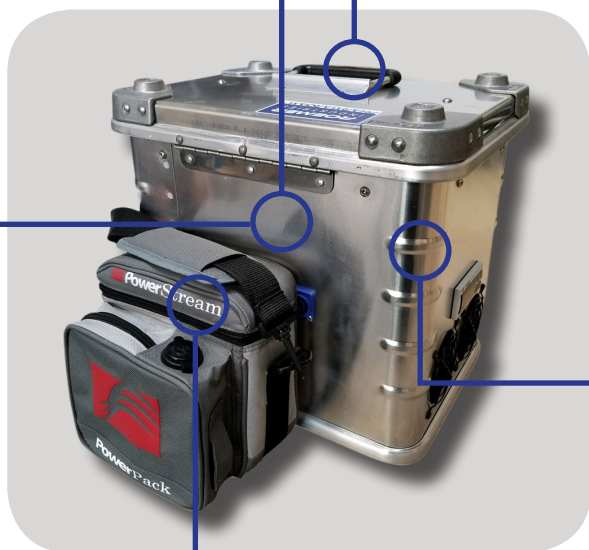
- Hazmat Certified and built with anodized aluminum to protect against stains and ensure easy maintenance and cleaning
- Water-tight, sealed and anodized, payload compartments resist water and sustain functions.

### Power Key

- Use power key to ensure unit stays on or off

### Battery Integration

- Batteries can remain separate from unit and connect with a cord or be integrated into unit with an internal plug
- Image displays PharmaRoam 7 with a separate battery held in a battery bag for BBS22



# HEMOROAM

## Technical Data



**HEMOROAM8XL**



**HEMOROAM15XL**



**HEMOROAM25XL**



**HEMOROAM3**



**HEMOROAM5X**

<b>Storage Capacity</b>	0.3 cu ft 8 liters	0.5 cu ft 15 liters	0.9 cu ft 25 liters	0.1 cu ft 3 liters	0.18 cu ft 5 liters
<b>Power Input</b>	110v or (optional) 220v	110v or (optional) 220v	110v or (optional) 220v	110v or (optional) 220v	110v or (optional) 220v
<b>Overall Dimensions</b>	(L x W x H) 24" x 18" x 22"	(L x W x H) 24" x 18" x 28"	(L x W x H) 24" x 18" x 37"	(L x W x H) 15" x 11" x 13.5"	(L x W x H) 15" x 11" x 13.5"
<b>Weight</b>	65 lbs	80 lbs	90 lbs	29 lbs w/o battery	30 lbs
<b>Swivel Handle Height</b>	(Included) Adjustable to 44"	(Included) Adjustable to 44"	(Included) Adjustable to 44"		
<b>Refrigerated Payload Dimension</b>	(L x W x H) 10.5" x 10" x 5"	(L x W x H) 11" x 10" x 10.5"	(L x W x H) 17" x 10" x 10.5"	(L x W x H) 5.5" x 4" x 8.5"	(L x W x H) 5" x 6" x 9"
<b>Refrigerated Payload Capacity</b>	6 units of 300ml RBC or 6 units of 300ml Plasma	10 units of 300ml RBC or 10 units of 300ml Plasma	18 units of 300ml RBC or 18 units of 300ml Plasma	1 unit of 300ml RBC or 1 unit of 300ml Plasma	6-8 units of 300ml RBC or Plasma
<b>Room Temp Storage Capacity</b>	3 units of 300ml Platelet Bags	3 units of 300ml Platelet Bags	3 units of 300ml Platelet Bags		
<b>Temperature Uniformity</b>	+/- 1.0° C at Setpoint 4.0° C	+/- 1.0° C at Setpoint 4.0° C	+/- 1.0° C at Setpoint 4.0° C	+/- 1.0° C at Setpoint 4.0° C	+/- 1.0° C at Setpoint 4.0° C
<b>Casters</b>	(Included) (2) Swivel/ Brakes (2) Fixed	(Included) (2) Swivel/ Brakes (2) Fixed	(Included) (2) Swivel/ Brakes (2) Fixed	(Optional) (2) Swivel/ Brakes (2) Fixed	
<b>Warranty</b>	1 Year Parts and Labor	1 Year Parts and Labor	1 Year Parts and Labor	1 Year Parts and Labor	1 Year Parts and Labor
<b>Battery Capacity</b>	BBS50 Included	BBS50 Included	BBS50 Included	(optional)	BBS12 Included (BBS22, BBS50 or BBS100 Optional)
<b>Battery Run Time</b>	6 hours to 5 days	6 hours to 5 days	6 hours to 5 days	(optional)	8-12 Hours
<b>Temperature Monitoring</b>	WiFi or Computer USB (Optional)	WiFi or Computer USB (Optional)	WiFi or Computer USB (Optional)	WiFi or Computer USB (Optional)	WiFi or Computer USB (Optional)

# HEMOROAM

## Technical Data



**HEMOROAM BX**



**HEMOROAM M5**



**HEMOROAM M25**



**HEMOROAM S50**



**HEMOROAM M100**

<b>Storage Capacity</b>	0.3 cu ft 8 liters	0.5 cu ft 15 liters	0.9 cu ft 25 liters	2.1 cu ft 60 liters	3.5 cu ft 100 liters
<b>Power Input</b>	110v or (optional) 220v	110v or (optional) 220v	110v or (optional) 220v	110v or (optional) 220v	110v or (optional) 220v
<b>Overall Dimensions</b>	(L x W x H) 23" x 15.5" x 10"	(L x W x H) 23" x 15.5" x 16"	(L x W x H) 23.6" x 15.7" x 22"	(L x W x H) 31.25" x 23.25" x 24" Add 6" height for dolly trolley	(L x W x H) 31.25" x 23.25" x 32" Add 8" height for dolly trolley
<b>Weight</b>	37 lbs	50 lbs	75 lbs	140 lbs	210 lbs
<b>Refrigerated Payload Dimension</b>	(L x W x H) 10" x 10" x 5"	(L x W x H) 10" x 10" x 9.5"	(L x W x H) 17.5" x 9.5" x 9.5"	(L x W x H) 23.25" x 16" x 10"	(L x W x H) 23.5" x 15" x 17.5"
<b>Refrigerated Payload Capacity</b>	6 units of 300ml RBC or 6 units of 300ml Plasma	10 units of 300ml RBC or 10 units of 300ml Plasma	18 units of 300ml RBC or 18 units of 300ml Plasma	78 units of 300ml RBC or 300ml Plasma	130 units of 300ml RBC or 300ml Plasma
<b>Temperature Uniformity</b>	+/- 1.0° C at Setpoint 4.0° C	+/- 1.0° C at Setpoint 4.0° C	+/- 1.0° C at Setpoint 4.0° C	+/- 1.0° C at Setpoint 4.0° C	+/- 1.0° C at Setpoint 4.0° C
<b>Optional Casters</b>	(2) Swivel/ Brakes (2) Fixed	(2) Swivel/ Brakes (2) Fixed	(2) Swivel/ Brakes (2) Fixed	(2) Swivel/ Brakes (2) Fixed	(2) Swivel/ Brakes (2) Fixed
<b>Warranty</b>	1 Year Parts and Labor	1 Year Parts and Labor	1 Year Parts and Labor	1 Year Parts and Labor	1 Year Parts and Labor
<b>Battery Capacity</b>	BBS12 Included (BBS22, BBS50 or BBS100 Optional)	(BBS50 or BBS100 Optional)	(BBS50 or BBS100 Optional)	(BBS100 Optional)	(BBS100 Optional)
<b>Battery Run Time</b>	12 hours	(Optional) 6 hours to 5 days	(Optional) 6 hours to 5 days	(Optional) 6 hours to 5 days	(Optional) 6 hours to 5 days
<b>Optional Temperature Monitoring</b>	WiFi or Computer USB (Optional)	WiFi or Computer USB (Optional)	WiFi or Computer USB (Optional)	WiFi or Computer USB (Optional)	WiFi or Computer USB (Optional)

# PHARMAROAM

## Technical Data



**PHARMAROAM3 PHARMAROAM5X PHARMAROAM7 PHARMAROAMBX**

<b>Storage Capacity</b>	0.1 cu ft 3 liters	0.17 cu ft 5 liters	0.3 cu ft 7 liters	0.3 cu ft 8 liters
<b>Power Input</b>	110v or (optional) 220v	110v or (optional) 220v	110v or (optional) 220v	110v or (optional) 220v
<b>Overall Dimensions</b>	(L x W x H) 15" x 11" x 13.5"	(L x W x H) 15" x 11" x 13.5"	(L x W x H) 15" x 11" x 13.5"	(L x W x H) 23" x 15.5" x 10"
<b>Weight</b>	29 lbs	30 lbs	26 Lbs 8 oz	37 lbs
<b>Refrigerated Payload Dimension</b>	(L x W x H) 5.5" x 4" x 8.5"	(L x W x H) 5" x 6" x 9"	Top Shelf (L x W x H) 5.75" x 7.25" x 3.25" Bottom Shelf 5.25" x 7.25" x 9.25"	(L x W x H) 10" x 10" x 5"
<b>Refrigerated Payload Capacity</b>	48 Vial Boxes (1"x1"x2.75") 480 Vaccine Doses 60 Single Use Syringes	75 Vial Boxes (1"x1"x2.75") 750 Vaccine Doses 105 Single Use Syringes	100 Vial Boxes (1"x1"x2.75") 1,000 Vaccine Doses 140 Single Use Syringes	120 Vial Boxes (1"x1"x2.75") 1,200 Vaccine Doses 160 Single Use Syringes
<b>Temperature Uniformity</b>	+/- .05° C at Setpoint 4.0° C	+/- .05° C at Setpoint 4.0° C	+/- .05° C at Setpoint 4.0° C	+/- 1.0° C at Setpoint 4.0° C
<b>Warranty</b>	1 Year Parts and Labor	1 Year Parts and Labor	1 Year Parts and Labor	1 Year Parts and Labor
<b>Battery Capacity</b>	(Optional) BBS22 (Carry Bag) BBS50 (Integrated or Separate)	BBS12 Included (BBS22, BBS50 or BBS100 Optional)	(Optional) BBS22 (Carry Bag) BBS50 (Integrated or Separate)	BBS12 Included (BBS22, BBS50 or BBS100 Optional)
<b>Battery Run Time</b>	(Optional) 6 hours to 5 days	8-12 Hours	(Optional) 6 hours to 5 days	12 hours



# PHARMA ROAM

## Technical Data



**PHARMA ROAM15**

**PHARMA ROAM25**

**PHARMA ROAM60**

**PHARMA ROAM100**




<b>Storage Capacity</b>	0.5 cu ft 15 liters	0.9 cu ft 25 liters	2.1 cu ft 60 liters	3.5 cu ft 100 liters
<b>Power Input</b>	110v or (optional) 220v	110v or (optional) 220v	110v or (optional) 220v	110v or (optional) 220v
<b>Overall Dimensions</b>	(L x W x H) 23" x 15.5" x 16"	(L x W x H) 23.6" x 15.7" x 22"	(L x W x H) 31.25" x 23.25" x 24"	(L x W x H) 31.25" x 23.25" x 32"
<b>Weight</b>	50 lbs	95 lbs	140 lbs	210 lbs
<b>Refrigerated Payload Dimension</b>	(L x W x H) 10" x 10" x 9.5"	(L x W x H) 17.5" x 9.5" x 9.5"	(L x W x H) 23.25" x 16" x 10"	(L x W x H) 23.5" x 15" x 17.5"
<b>Refrigerated Payload Capacity</b>	230 Vial Boxes (1"x1"x2.75") 2,300 Vaccine Doses 290 Single Use Syringes	445 Vial Boxes (1"x1"x2.75") 4,450 Vaccine Doses 550 Single Use Syringes	980 Vial Boxes (1"x1"x2.75") 9,800 Vaccine Doses 1,230 Single Use Syringes	1,800 Vial Boxes (1"x1"x2.75") 18,000 Vaccine Doses 2,250 Single Use Syringes
<b>Temperature Uniformity</b>	+/- 1.0° C at Setpoint 4.0° C	+/- 1.0° C at Setpoint 4.0° C	+/- 1.0° C at Setpoint 4.0° C	+/- 1.0° C at Setpoint 4.0° C
<b>Warranty</b>	1 Year Parts and Labor	1 Year Parts and Labor	1 Year Parts and Labor	1 Year Parts and Labor
<b>Optional Battery Capacity</b>	(Optional) BBS50 or BBS100 (Integrated or Separate)	BBS50 or BBS100 (Integrated or Separate)	BBS50 or BBS100 (Integrated or Separate)	BBS100 or BBS200 (Integrated or Separate)
<b>Optional Battery Run Time</b>	(Optional) 6 hours to 5 days	6 hours to 5 days	6 hours to 5 days	6 hours to 5 days

### The Features You Need

- Smart charge technology switches charge automatically between battery and electrical power plugs
- Emergency alarms if battery charge is too low
- Digital microprocessor temperature controller with a built-in alarm
- Temperature uniformity of +/- 0.5°C (at 4°C set point)
- Water tight, sealed and anodized, payload compartment
- Durable Military-grade Aluminum (MIL-SPEC)
- Power: 110-240 volt AC, 12/24 volt DC or optional battery or optional solar power
- Includes BBS12, an on-board battery with 8-12 hours of battery life and capable of swapping out replacement fully charged battery in the field. Other batteries available with longer battery life.
- Stackable (stacking corners)
- External temperature port ready for data loggers
- Complies with cold-chain protocols of VFC, FDA, CDC, AABB & AATB
- Pad lockable



### Specifications




Model Number	HEMOROAM5X
Temperature Range	2° C to 10° C
Overall Dimensions	(L x W x H) 15" x 11" x 13.5"
Weight	30 lbs
Programmable Temperature Ranges	2° C to 8° C * 1° C to 6° C ***
Standard Power Input	12-24 VDC  110-240 VAC 
Optional Power Input	Solar 
Internal Payload Dimension	(L x W x H) 5" x 6" x 9"
Payload Capacity	6-8 units of 300ml RBC 5 Liters/5.3 Quarts or Plasma
Temperature Uniformity	+/- 0.5° C at Setpoint 4.0° C
Warranty	1 Year Parts and Labor
Battery Capacity	BBS12 Included
Battery Run Time	8-12 Hours

### The Features You Need

- Smart charge technology switches charge automatically between battery and electrical power plugs
- Emergency alarms if battery charge is too low
- Digital microprocessor temperature controller with a built-in alarm
- Temperature uniformity of +/- 0.5°C (at 4°C set point)
- Water tight, sealed and anodized, payload compartment
- Durable Military-grade Aluminum (MIL-SPEC)
- Power: 110-240 volt AC, 12/24 volt DC or optional battery or optional solar power
- Includes BBS12, an on-board battery with 8-12 hours of battery life and capable of swapping out replacement fully charged battery in the field. Other batteries available with longer battery life.
- Stackable (stacking corners)
- External temperature port ready for data loggers
- Complies with cold-chain protocols of VFC, FDA, CDC, AABB & AATB
- Pad lockable



### Specifications

Model Number	PHARMAROAM5X
Temperature Range	2° C to 10° C
Overall Dimensions	(L x W x H) 15" x 11" x 13.5"
Weight	30 lbs
Programmable Temperature Ranges	2° C to 8° C * 1° C to 6° C ***
Standard Power Input	12-24 VDC  110-240 VAC 
Optional Power Input	Solar 
Internal Payload Dimension	(L x W x H) 5" x 6" x 9"
Payload Capacity	75 1" x 1" x 2.75" Vial Boxes or 750 Units of Vaccine Doses or 105 Single Use Syringes
Temperature Uniformity	+/- 0.5° C at Setpoint 4.0° C
Warranty	1 Year Parts and Labor
Battery Capacity	BBS12 Included
Battery Run Time	8-12 Hours

## Battery-Powered

### BBS Battery Backup

Roemer is the only manufacturer of mobile, battery-powered units that can be carried anywhere for use

#### BBS50



#### Longer power times to keep refrigerators and freezers running efficiently

- Durable, lead-based battery
- Contained in sturdy aluminum case that can be attached or stacked with refrigerator and freezer units
- Run Time (Depends On Model)
  - **Refrigerator:** up to 48 Hours
  - **Freezer:** up to 24 Hours

#### BBS100



#### Maximum power times to keep refrigerators and freezers running during natural disasters

- Durable, lead-based battery
- Contained in sturdy aluminum case that can be attached or stacked with refrigerator and freezer units
- Run Time (Depends On Model)
  - **Refrigerator Model:** 2°C to 8°C 1°C to 6°C up to 48 Hours
  - **Freezer:** -30°C to -25°C up to 24 Hours

#### BBS22



#### Lightweight and can easily move with your ROAM refrigerator for temporary power

- Carrybag battery backup system
- Can be integrated into unit
- Lithium battery
- Strap for easy carry over shoulder
- Lightweight design
- Run Time (Depends On Model)
  - **Refrigerator:** up to 12-36 Hours
  - **Freezer:** up to 6-24 Hours