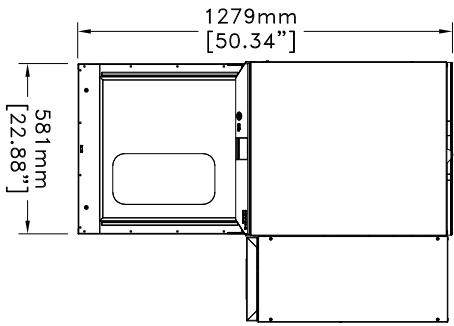
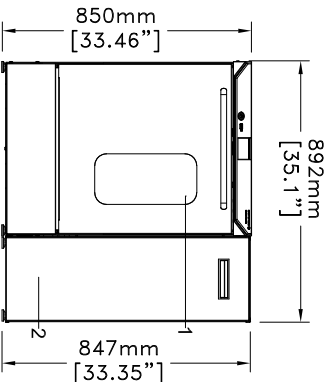


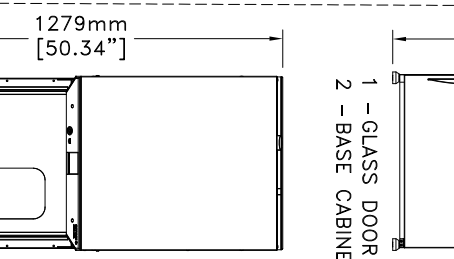
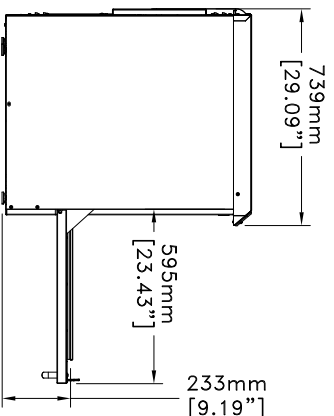
1 - GLASS DOOR - OPTION -

<b>Overall dimensions</b>
Height 850 mm (33.46")
Width 600 mm (23.62")
Depth 739 mm (29.09")
<b>Chamber dimensions</b>
Height 498 mm (19.60")
Width 535 mm (21.06")
Depth 520 mm (20.47")
<b>Weight</b>
85kg (187 lbs)
<b>Dimensions tolerances :</b>
+/- 5mm (+/- 0.2")



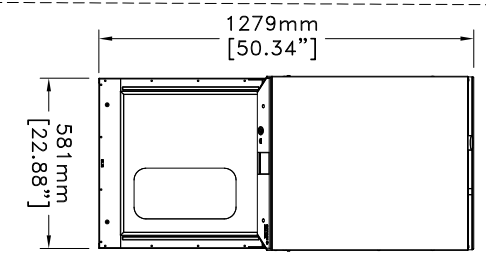
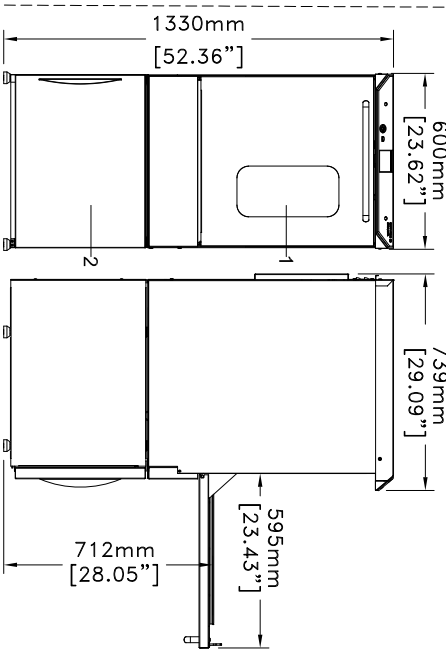
2 - SIDE CHEMICAL CABINET - OPTION -

<b>Overall dimensions</b>
Height 850 mm (33.46")
Width 892 mm (35.1")
Depth 739 mm (29.09")
<b>Chamber dimensions</b>
Height 498 mm (19.60")
Width 535 mm (21.06")
Depth 520 mm (20.47")
<b>Weight</b>
111kg (243 lbs)
<b>Dimensions tolerances :</b>
+/- 5mm (+/- 0.2")



1 - GLASS DOOR - OPTION -

<b>Overall dimensions</b>
Height 850 mm (33.46")
Width 892 mm (35.1")
Depth 739 mm (29.09")
<b>Chamber dimensions</b>
Height 498 mm (19.60")
Width 535 mm (21.06")
Depth 520 mm (20.47")
<b>Weight</b>
111kg (243 lbs)
<b>Dimensions tolerances :</b>
+/- 5mm (+/- 0.2")



2 - BASE CABINET (PLINTH) - OPTION -

<b>Overall dimensions</b>
Height 1330 mm (52.36")
Width 600 mm (23.62")
Depth 739 mm (29.09")
<b>Chamber dimensions</b>
Height 498 mm (19.60")
Width 535 mm (21.06")
Depth 520 mm (20.47")
<b>Weight</b>
111kg (243 lbs)
<b>Dimensions tolerances :</b>
+/- 5mm (+/- 0.2")
<b>Minimum distance area around the washer :</b>
460 mm (18.11")

**Required Utilities:**

**Cold Water/Cold Water for Condenser/Purified Water (each requires)** – shut off valve with (Ø20/27mm (¾inch) male hose thread nozzle) / flow rate of 20 l/min (5 ¼ gal/min), pressure between 200 to 600 kPa (29 and 87 psi)  
**Cold water source for condenser** should be less than 77°F (25°C)

**Drain Connection** – fixed standpipe and plumbing trap (min. inside diam. 40 mm – 1 ½ inches)  
 Height above finished floor (standard) 500 – 700 mm (20–27 inches)  
 Height above finished floor (Plinth option) 1000 –1200 mm (40–47 inches)  
 Flow rate: 40 l/min (10 ½ gal/min)

**Drain Connection** – Discharge for condenser –fixed standpipe and plumbing trap (min. inside diam. 40 mm – 1 ½ inches)  
 Maximum height above finished floor level (standard) 0–400 mm (0–15.74 inches)  
 Maximum height above finished floor level (Plinth option) 0–850 mm (0–33.46 inches)

**Electricity (50 Hz)**

220–240 V, 50 Hz, 1+PE, 7 kW, 31 A
200–208 V, 50 Hz, 3+PE, 7 kW, 21 A
220–240 V, 50 Hz, 3+PE, 7 kW, 18 A
400 V, 50 Hz, 3N+PE, 7 kW, 11 A

**Electricity (60 Hz)**

120 V, 60 Hz, 1+PE, 2 kW, 17 A
120 V, 60 Hz, 1+PE, 2.4 kW, 20 A
200–208 V, 60 Hz, 1+PE, 7 kW, 34 A
220–240 V, 60 Hz, 1+PE, 7 kW, 31 A
200–208 V, 60 Hz, 3+PE, 7 kW, 20 A
220–240 V, 60 Hz, 3+PE, 7 kW, 18 A

PLEASE REFER TO INSTALLATION MANUAL FOR ALL SERVICES TECHNICALS SPECIFICATIONS

**GENERAL ARRANGEMENT DRAWING**

ULTIMA 815 LX GAD\_ULTIMA\_815LX\_05\_EN\_2206

