



Item No.: H1010-MR

Thank you for purchasing the Incu-Shaker 10L with MAGic Clamp Platform.

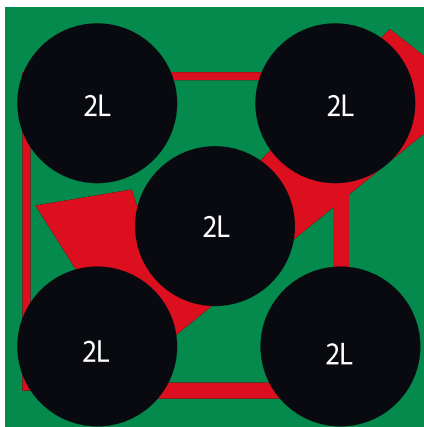
**For your convenience, the MAGic Clamp platform has already been installed to your incubator.**

### Flask Clamp Installation and Alignment

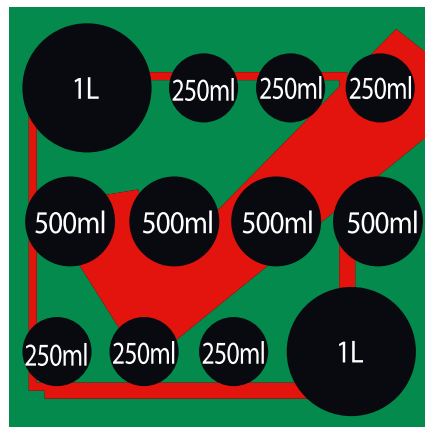
The MAGic Clamp Platform is capable of supporting 5 x 2000ml, 9 x 1000ml, 14 x 500ml, 25 x 250ml 36 x 125ml, 49 x 50ml flasks or various combinations of these flask sizes.

In addition, this platform offers several accessories racks for securing tubes and bottle.

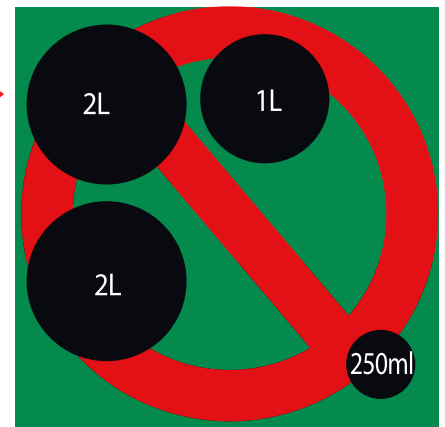
To attach a flask or tube rack clamp, simply place the clamp (magnet side down) on the platform in the desired location. When attaching clamps, **always** ensure a balanced load. (Please see below for an example of both properly and improperly balanced loads.)



Example of a properly balanced load containing 5x2L flasks



Example of properly a balanced load containing a mixture of flask sizes



Example of an improperly a balanced load

