



CCF90 Cryogenic Canister Freezer

phasetwo's CCF90 Cryogenic Canister Freezer delivers users the latest technology in a new and innovative package.

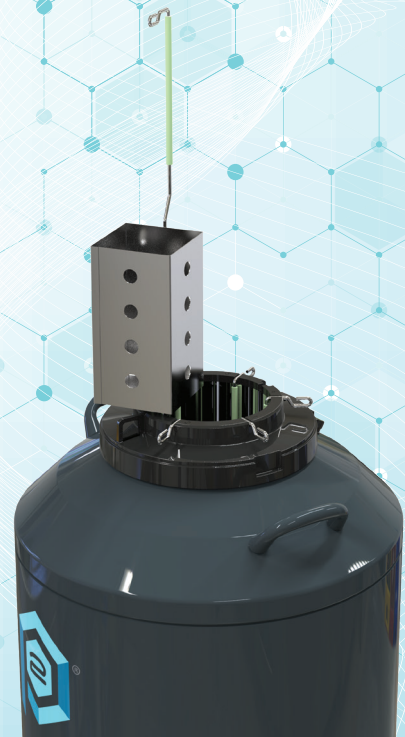
Offering the outstanding thermal performance of an aluminum container, the CCF90 is custom designed for the IVF and animal husbandry markets, and gives users multiple storage modes. The CCF90 delivers maximum storage and industry leading performance in a container not typically seen in the market.

We custom designed the one-piece lid to enable the operator to remove the lid, securely position it on one of the handles, and access stored samples with both hands to reduce exposure time and retain sample viability.

The design also provides a fixed and dedicated position for the optional Low Level and Temperature Alarm (LLTA). The LLTA continues to monitor temperature and level while samples are removed or inserted, providing unmatched sample security and ease of use.

Features

- New one-piece lockable lid design.
- Low Level and Temperature Alarm remains in place while product is inserted or removed for product security (optional).
- Premium materials provide industry leading LN2 performance.
- Largest storage capacity.
- Numbered canister locations for easy product identification.





phasetwo®

General Specifications



Model	CCF90
LN2 Capacity, Liquid (L)	91
Outer Diameter (in/mm)	27 (685.8)
Overall Height (in/mm)	31.4 (772.16)
Neck Opening (in/mm)	8.5(216)
Weight Empty (lbs/kg)	80 (36.3)
Weight Full (lbs/kg)	242.2 (109.9)
Number of square Canisters	6
Normal Evaporation Rate (L/day)	0.76
Static Holding Time (days)	119
2ml Vials (6/cane)	4,464
0.5cc Straws *2 goblets per cane / 5 staws per goblet	7,440
0.25cc Straws *2 goblets per cane / 14 staws per goblet	20,832
0.5cc Straws (Bulk Goblets) *400 starws per goblet / 8 goblets per rack	19,200
0.25cc Straws (Bulk Goblets) *895 starws per goblet / 8 goblets per rack	42,960

Evaporation Rate and Static Holding Time are nominal. Actual Evaporation rate and static holding time will be affected by application, atmospheric conditions, container history and manufacturing tolerances.

Vacuum: 5 year warranty | Materials and Workmanship: 2 year warranty

1110 Ridgeland Pkwy, Suite 110, Alpharetta, GA 30004 USA | 770.985.1313 | www.phasetwoCCS.com