



MDF-DU502VH-PA

## VIP® ECO

ENERGY STAR® Certified  
Natural Refrigerant -86°C Freezer

MDF-DU502VH-PA, 220V  
MDF-DU502VHA-PA, 115V

18.6 cu.ft. | 528 L



Ideal for new or replacement installations requiring a 115V or 220V connection, the VIP ECO 18.6 cu.ft. (528 L) upright ultra-low temperature freezer delivers the lowest daily energy usage.<sup>1)</sup> Performance, reliability and energy efficiency combine to secure your most valuable biological samples.

### Performance and Reliability

The robust refrigeration system provides dependable cooling and temperature performance through specialty engineered heat transfer components and time tested natural refrigerants. Reserve refrigeration power assures exceptionally fast temperature recovery following door openings. Performance and reliability are never compromised when it comes to storing your valued products.

### Energy Efficient,<sup>1)</sup> Balanced Power

Smart compressors, natural refrigerants and integrated electronics combine to lower your facility's operating costs.

- 0.35 kWh/cu.ft. Daily Energy Consumption
- 6.75 kWh/day, Steady State at -80°C
- 5.20 kWh/day, Steady State at -70°C

Temperature Uniformity

- ±1.38°C at -80°C
- ±2.51°C at -70°C

### Security Control and Monitoring

An eye level, door mounted, color LCD touchscreen allows full user control while the USB port makes transferring logged data to a PC convenient. All performance attributes are displayed, plus an internal time/temperature log is expressed in graphic form.



### Natural Refrigerants

Natural refrigerants minimize environmental impact without jeopardizing ultra-low temperature freezer performance.



### EZlatch

EZlatch is the centerpiece of a holistic access and frost mitigation system. Simplified one-handed operation maintains the integrity of the door seal to assure energy efficiency.



### Ease of Use

A full function display panel includes audible and visual warnings, unit diagnostics, temperature and door opening history.

<sup>1)</sup> Based on independent third-party testing at time of publication. ENERGY STAR test results for submitted products can be compared for performance across the competitive market. For results see the ENERGY STAR website [www.energystar.gov/productfinder/product/certified-lab-grade-refrigeration/details/2303094](http://www.energystar.gov/productfinder/product/certified-lab-grade-refrigeration/details/2303094). See Certification Number 4788321237.



# VIP<sup>ECO</sup> -86°C ULT Upright Freezer

MDF-DU502VH-PA, 220V  
MDF-DU502VHA-PA, 115V



The outer door gasket is easily removed and replaced without tools while the freezer remains in operation.

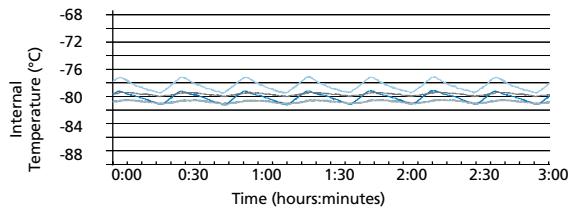
Model MDF-DU502VH-PA

## Efficient Sample Storage

The upright cabinet design employs patented VIP Plus insulated panels that offer space efficiency. This allows the freezer cabinet to maximize storage space, holding up to 384, 2" boxes within a 7.49 sq.ft. (0.70 m<sup>2</sup>) footprint.

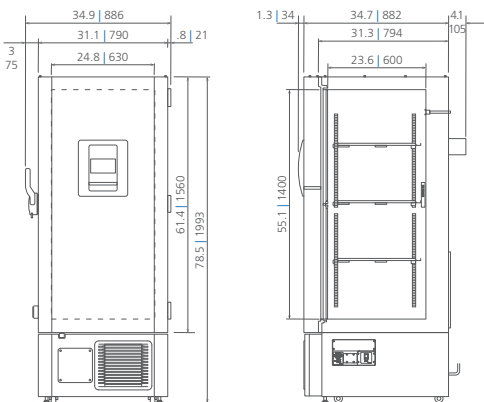
## Temperature Uniformity Data:

-80°C setpoint at 23°C ambient temperature, empty freezer





## Dimensions

Unit : inch | mm



\*Note: External cabinet depth of 37.5" (952 mm) permits passage through a standard 38" (965 mm) doorway when rear stand-off brackets are removed, four screws. Bracket removal is not required for 40" (1016 mm) doorway.

Model Number	MDF-DU502VH-PA	MDF-DU502VHA-PA	
External Dimensions (W x D x H) <sup>1)</sup>	inches   mm 31.1 x 34.7 x 78.5   790 x 882 x 1993		
Internal Dimensions (W x D x H)	inches   mm 24.8 x 23.6 x 55.1   630 x 600 x 1400		
Volume	cu.ft.   liters 18.6   528		
Net Weight	lbs   kg 542   1246		
Capacity (2" boxes)	qty 384		
Capacity (3" boxes)	qty 256		
Inventory Racks (2" boxes)	qty 16		
Inventory Racks (3" boxes)	qty 16		
<b>Performance</b>			
Warranty <sup>2)</sup>	5 years parts and labor		
Cooling Performance <sup>3)</sup>	°C -86		
Temperature Setting Range <sup>3)</sup>	°C -50 to -90 in 1° increments		
Temperature Control Range <sup>3)</sup>	°C -50 to -86 in 1° increments		
<b>Control</b>			
Controller	Microprocessor, touchscreen data entry, password protected		
Display	LCD color touchscreen		
Temperature Sensor	Pt-1000		
<b>Refrigeration</b>			
Refrigeration System	Synchronized variable speed cascade system		
Compressors	W	(2) 750, variable speed	
Refrigerant	High-stage R-290 natural refrigerant Low-stage R-170 natural refrigerant		
Insulation Thickness, Material	inches   mm	3.1   80, foamed-in-place + VIP Plus vacuum insulated panels	
<b>Construction</b>			
Exterior Material	Painted electrogalvanized steel		
Interior Material	Powder coated electrogalvanized steel		
Outer Door	qty	1 (key lock with provision for optional pad lock)	
Inner Doors	qty	2 (insulated, ABS, stainless steel frames, positive latches)	
Shelves	qty	3 (adjustable)	
Shelf Dimensions (W x D)	inches   mm	24.2 x 21.0   615 x 534	
Max. Load per Shelf	lbs   kg	110   50	
Auto Vacuum Relief	qty	1: in door	
Manual Vacuum Relief	qty	1: lower left side	
Access Ports	qty	3: upper back wall (back-up system), bottom left (recorder sensor), bottom right (access)	
Access Port Diameter	inches   mm	0.6   17	
Casters	qty	4 (2 leveling feet on front base)	
<b>Alarms</b> (V = Visual Alarm, B = Buzzer Alarm, R = Remote Alarm)			
Power Failure		V-B-R	
Temperature (High and Low)		V-B-R	
Sensor Failure		V-B-R	
Filter Alarm		V-B	
Door Open		V-B	
Battery Check		V	
Remote Alarm Contacts		DC 30V 2A (normally open, normally closed, common)	
<b>Electrical and Noise Level</b>			
Power Supply	 	220V, 1Ø, NEMA 6-15P, requires NEMA 6-15R receptacle	115V, 1Ø, NEMA 5-20P, requires NEMA 5-20R receptacle
Noise Level <sup>4)</sup>	dB(A)	46	
<b>Options</b>			
Inner Door Kit with 5 Smaller Doors <sup>5)</sup>		MDF-5ID5-PW	
Inner Door Kit with 4 Smaller Doors <sup>5)</sup>		MDF-5ID4-PW	
Liquid CO <sub>2</sub> Back-Up System		MDF-UB7-PW	
<b>Temperature Recorder</b>			
Circular Type	6", 7 day circular	MTRC954	
Chart Paper	52 charts per box	C7100386REV	
Ink Pen	pack of 6	R252	
<b>Optional Communication System</b>			
Wireless, Cloud-Based, Automatic Data Management		LabAlert® Monitoring System	

<sup>1)</sup> Exterior dimensions of main cabinet only, excluding handle and other external projections

<sup>2)</sup> Current warranty offered at time of printing and may be subject to change; US and Canada only

<sup>3)</sup> Air temperature measured at freezer center, ambient temperature +30°C, no load

<sup>4)</sup> Actual value, background noise 20 dB(A)

<sup>5)</sup> Installation of small inner door kit may affect usable storage capacity

Specifications are subject to change without notice.

For latest specification information contact PHC Corporation of North America at info@phcd.com.

Performance data herein is based on independent testing at time of publication.



PHC Corporation of North America  
1300 Michael Drive, Suite A, Wood Dale, IL 60191  
Toll Free USA (800) 858-8442, Fax (630) 238-0074  
www.phcd.com/us/biomedical

